

Product datasheet for **TA375760S**

EGFR Rabbit Polyclonal Antibody

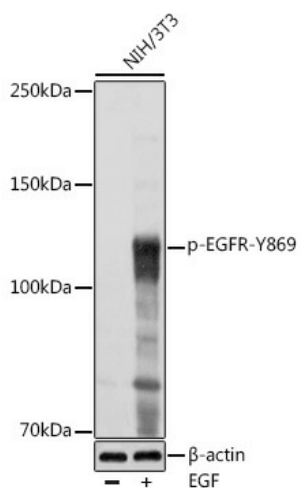
Product data:

Product Type:	Primary Antibodies
Applications:	WB
Recommended Dilution:	WB,1:500 - 1:2000
Reactivity:	Human, Mouse, Rat
Modifications:	Phospho Y869
Host:	Rabbit
Isotype:	IgG
Clonality:	Polyclonal
Immunogen:	A phospho specific peptide corresponding to residues surrounding Y869 of human EGFR.
Formulation:	Buffer: PBS with 0.02% sodium azide,50% glycerol,pH7.3.
Concentration:	lot specific
Purification:	Affinity purification
Conjugation:	Unconjugated
Storage:	Store at -20°C. Avoid freeze / thaw cycles.
Stability:	Shelf life: one year from despatch.
Predicted Protein Size:	44kDa/69kDa/77kDa/134kDa
Gene Name:	epidermal growth factor receptor
Database Link:	Entrez Gene 1956 Human P00533
Background:	The protein encoded by this gene is a transmembrane glycoprotein that is a member of the protein kinase superfamily. This protein is a receptor for members of the epidermal growth factor family. EGFR is a cell surface protein that binds to epidermal growth factor. Binding of the protein to a ligand induces receptor dimerization and tyrosine autophosphorylation and leads to cell proliferation. Mutations in this gene are associated with lung cancer. [provided by RefSeq, Jun 2016]
Synonyms:	ERBB; ERBB1; HER1; mENA; PIG61



[View online »](#)

Product images:



Western blot analysis of extracts of NIH/3T3, using Phospho-EGFR-Y869 antibody ([TA375760]) at 1:1000 dilution. NIH/3T3 cells were treated by EGF (100 ng/ml) at 37°C for 30 minutes after serum-starvation overnight. | Secondary antibody: HRP Goat Anti-Rabbit IgG (H+L) at 1:10000 dilution. | Lysates/proteins: 25ug per lane. | Blocking buffer: 3% nonfat dry milk in TBST. | Detection: ECL Basic Kit . | Exposure time: 1s.