

## Product datasheet for **TA375756**

### EGFR Rabbit Polyclonal Antibody

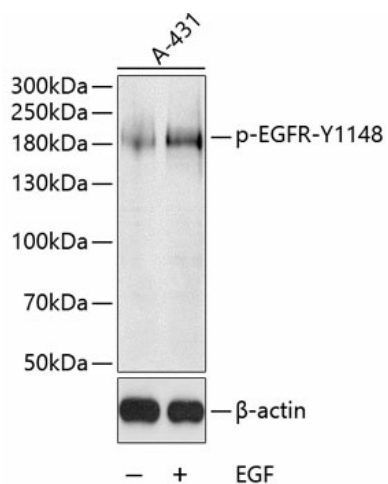
#### Product data:

Product Type:	Primary Antibodies
Applications:	WB
Recommended Dilution:	WB,1:500 - 1:2000
Reactivity:	Human
Modifications:	Phospho Y1148
Host:	Rabbit
Isotype:	IgG
Clonality:	Polyclonal
Immunogen:	A phospho specific peptide corresponding to residues surrounding Y1148 of human EGFR
Formulation:	Buffer: PBS with 0.02% sodium azide,50% glycerol,pH7.3.
Concentration:	lot specific
Purification:	Affinity purification
Conjugation:	Unconjugated
Storage:	Store at -20°C. Avoid freeze / thaw cycles.
Stability:	Shelf life: one year from despatch.
Predicted Protein Size:	44kDa/69kDa/77kDa/134kDa
Gene Name:	epidermal growth factor receptor
Database Link:	<a href="#">Entrez Gene 1956 Human P00533</a>
Background:	The protein encoded by this gene is a transmembrane glycoprotein that is a member of the protein kinase superfamily. This protein is a receptor for members of the epidermal growth factor family. EGFR is a cell surface protein that binds to epidermal growth factor. Binding of the protein to a ligand induces receptor dimerization and tyrosine autophosphorylation and leads to cell proliferation. Mutations in this gene are associated with lung cancer.
Synonyms:	ERBB; ERBB1; HER1; mENA; PIG61



[View online »](#)

## Product images:



Western blot analysis of extracts of A-431 cells, using Phospho-EGFR-Y1148 antibody (TA375756) at 1:1000 dilution. A431 cells were treated by EGF (100ng/mL) for 30 minutes after serum-starvation overnight. | Secondary antibody: HRP Goat Anti-Rabbit IgG (H+L) at 1:10000 dilution. | Lysates/proteins: 25ug per lane. | Blocking buffer: 3% BSA.