

## Product datasheet for **TA375751S**

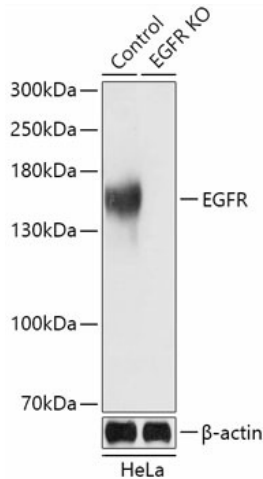
### EGFR Rabbit Polyclonal Antibody

#### Product data:

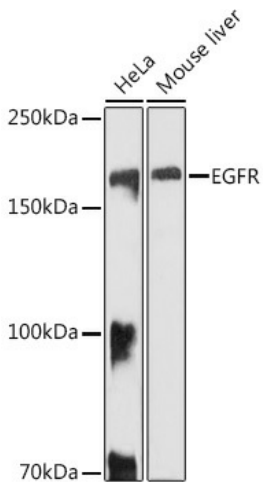
|                         |   |
|-------------------------|---|
| Product Type:           | Primary Antibodies  |
| Applications:           | WB  |
| Recommended Dilution:   | WB,1:500 - 1:1000   |
| Reactivity:             | Human, Mouse, Rat   |
| Modifications:          | Unmodified  |
| Host:                   | Rabbit  |
| Isotype:                | IgG   |
| Clonality:              | Polyclonal  |
| Immunogen:              | A synthetic peptide corresponding to a sequence within amino acids 1100-1200 of human EGFR (NP_005219.2).   |
| Formulation:            | Buffer: PBS with 0.02% sodium azide,50% glycerol,pH7.3.   |
| Concentration:          | lot specific  |
| Purification:           | Affinity purification   |
| Conjugation:            | Unconjugated  |
| Storage:                | Store at -20°C. Avoid freeze / thaw cycles.   |
| Stability:              | Shelf life: one year from despatch.   |
| Predicted Protein Size: | 44kDa/69kDa/77kDa/134kDa  |
| Gene Name:              | epidermal growth factor receptor  |
| Database Link:          | <a href="#">Entrez Gene 1956 Human P00533</a>   |
| Background:             | The protein encoded by this gene is a transmembrane glycoprotein that is a member of the protein kinase superfamily. This protein is a receptor for members of the epidermal growth factor family. EGFR is a cell surface protein that binds to epidermal growth factor. Binding of the protein to a ligand induces receptor dimerization and tyrosine autophosphorylation and leads to cell proliferation. Mutations in this gene are associated with lung cancer. |
| Synonyms:               | ERBB; ERBB1; HER1; mENA; PIG61  |



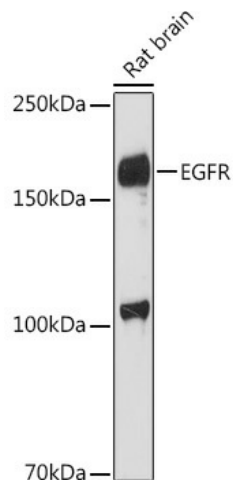
[View online »](#)

**Product images:**


Western blot analysis of extracts from normal (control) and EGFR knockout (KO) HeLa cells, using EGFR antibody ([TA375751]) at 1:3000 dilution. | Secondary antibody: HRP Goat Anti-Rabbit IgG (H+L) at 1:10000 dilution. | Lysates/proteins: 25ug per lane. | Blocking buffer: 3% nonfat dry milk in TBST. | Detection: ECL Basic Kit . | Exposure time: 1s.



Western blot analysis of extracts of various cell lines, using EGFR antibody ([TA375751]) at 1:1000 dilution. | Secondary antibody: HRP Goat Anti-Rabbit IgG (H+L) at 1:10000 dilution. | Lysates/proteins: 25ug per lane. | Blocking buffer: 3% nonfat dry milk in TBST. | Detection: ECL Basic Kit . | Exposure time: 10s.



Western blot analysis of extracts of Rat brain, using EGFR antibody ([TA375751]) at 1:1000 dilution. | Secondary antibody: HRP Goat Anti-Rabbit IgG (H+L) at 1:10000 dilution. | Lysates/proteins: 25ug per lane. | Blocking buffer: 3% nonfat dry milk in TBST. | Detection: ECL Enhanced Kit . | Exposure time: 180s.

