

## Product datasheet for **TA375750**

### EGFR Rabbit Polyclonal Antibody

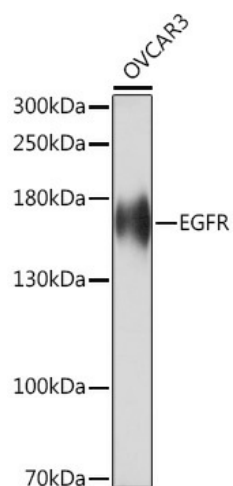
#### Product data:

Product Type:	Primary Antibodies
Applications:	ICC/IF, IP, WB
Recommended Dilution:	WB,1:500 - 1:2000 IF,1:50 - 1:200 IP,1:50 - 1:200
Reactivity:	Human, Mouse, Rat
Host:	Rabbit
Isotype:	IgG
Clonality:	Polyclonal
Immunogen:	Recombinant protein of human EGFR.
Formulation:	Buffer: PBS with 0.02% sodium azide,50% glycerol,pH7.3.
Concentration:	lot specific
Purification:	Affinity purification
Conjugation:	Unconjugated
Storage:	Store at -20°C. Avoid freeze / thaw cycles.
Stability:	Shelf life: one year from despatch.
Predicted Protein Size:	44kDa/69kDa/77kDa/134kDa
Gene Name:	epidermal growth factor receptor
Database Link:	<a href="#">Entrez Gene 1956 Human P00533</a>
Background:	The protein encoded by this gene is a transmembrane glycoprotein that is a member of the protein kinase superfamily. This protein is a receptor for members of the epidermal growth factor family. EGFR is a cell surface protein that binds to epidermal growth factor. Binding of the protein to a ligand induces receptor dimerization and tyrosine autophosphorylation and leads to cell proliferation. Mutations in this gene are associated with lung cancer.
Synonyms:	ERBB; ERBB1; HER1; mENA; PIG61

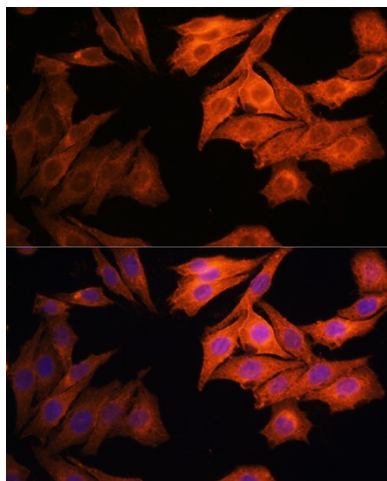


[View online »](#)

## Product images:



Western blot analysis of extracts of OVCAR3 cells, using EGFR Rabbit pAb (TA375750) at 1:3000 dilution. | Secondary antibody: HRP Goat Anti-Rabbit IgG (H+L) at 1:10000 dilution. | Lysates/proteins: 25ug per lane. | Blocking buffer: 3% nonfat dry milk in TBST. | Detection: ECL Basic Kit. | Exposure time: 10s.



Immunofluorescence analysis of HeLa cells using EGFR antibody (TA375750) at dilution of 1:100. Blue: DAPI for nuclear staining.