

Product datasheet for **TA375749S**

EGFR Rabbit Polyclonal Antibody

Product data:

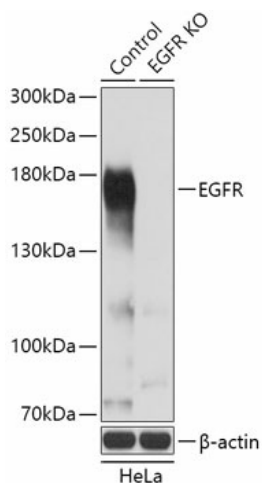
Product Type:	Primary Antibodies
Applications:	ICC/IF, IHC, WB
Recommended Dilution:	WB,1:500 - 1:2000 IF,1:50 - 1:200 IP,1:50 - 1:100
Reactivity:	Human
Modifications:	Unmodified
Host:	Rabbit
Isotype:	IgG
Clonality:	Polyclonal
Immunogen:	Recombinant fusion protein containing a sequence corresponding to amino acids 1021-1210 of human EGFR (NP_005219.2).
Formulation:	Buffer: PBS with 0.02% sodium azide,50% glycerol,pH7.3.
Concentration:	lot specific
Purification:	Affinity purification
Conjugation:	Unconjugated
Storage:	Store at -20°C. Avoid freeze / thaw cycles.
Stability:	Shelf life: one year from despatch.
Predicted Protein Size:	44kDa/69kDa/77kDa/134kDa
Gene Name:	epidermal growth factor receptor
Database Link:	Entrez Gene 1956 Human P00533
Background:	The protein encoded by this gene is a transmembrane glycoprotein that is a member of the protein kinase superfamily. This protein is a receptor for members of the epidermal growth factor family. EGFR is a cell surface protein that binds to epidermal growth factor. Binding of the protein to a ligand induces receptor dimerization and tyrosine autophosphorylation and leads to cell proliferation. Mutations in this gene are associated with lung cancer.



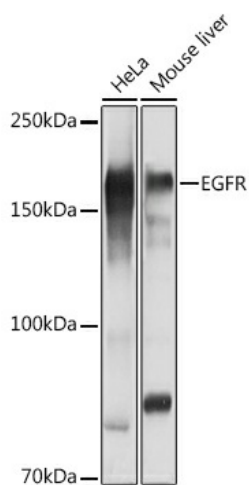
[View online »](#)

Synonyms: ERBB; ERBB1; HER1; mENA; PIG61

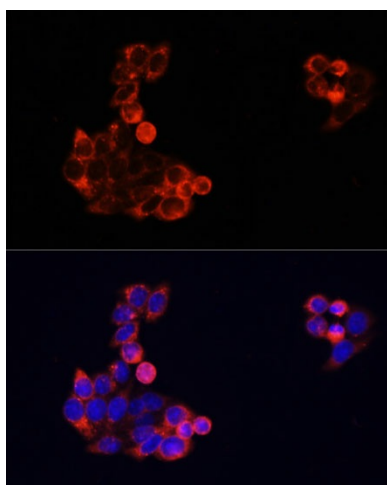
Product images:



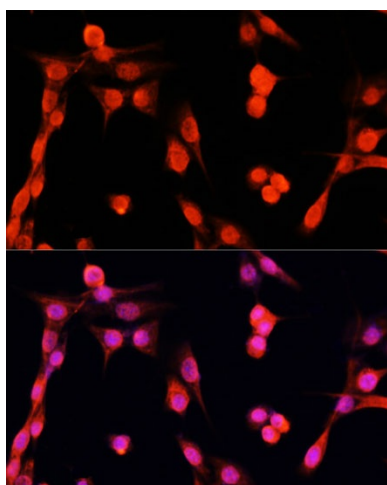
Western blot analysis of extracts from normal (control) and EGFR knockout (KO) HeLa cells, using EGFR antibody ([TA375749]) at 1:3000 dilution. | Secondary antibody: HRP Goat Anti-Rabbit IgG (H+L) at 1:10000 dilution. | Lysates/proteins: 25ug per lane. | Blocking buffer: 3% nonfat dry milk in TBST. | Detection: ECL Basic Kit . | Exposure time: 3s.



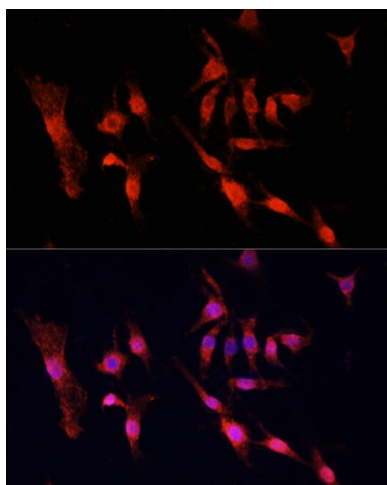
Western blot analysis of extracts of various cell lines, using EGFR antibody ([TA375749]) at 1:1000 dilution. | Secondary antibody: HRP Goat Anti-Rabbit IgG (H+L) at 1:10000 dilution. | Lysates/proteins: 25ug per lane. | Blocking buffer: 3% nonfat dry milk in TBST. | Detection: ECL Basic Kit . | Exposure time: 1s.



Immunofluorescence analysis of HeLa cells using EGFR antibody ([TA375749]) at dilution of 1:100. Blue: DAPI for nuclear staining.



Immunofluorescence analysis of NIH/3T3 cells using EGFR antibody ([TA375749]) at dilution of 1:100. Blue: DAPI for nuclear staining.



Immunofluorescence analysis of PC12 cells using EGFR antibody ([TA375749]) at dilution of 1:100. Blue: DAPI for nuclear staining.