

## Product datasheet for **TA375730**

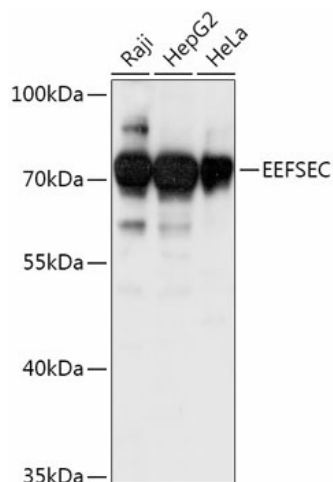
### EEFSEC Rabbit Polyclonal Antibody

#### Product data:

Product Type:	Primary Antibodies
Applications:	ELISA, WB
Recommended Dilution:	WB, 1:500 - 1:2000 ELISA, Recommended starting concentration is 1 µg/mL. Please optimize the concentration based on your specific assay requirements.
Reactivity:	Human
Modifications:	Unmodified
Host:	Rabbit
Isotype:	IgG
Clonality:	Polyclonal
Formulation:	Buffer: PBS with 0.01% thimerosal, 50% glycerol, pH7.3.
Concentration:	lot specific
Purification:	Affinity purification
Conjugation:	Unconjugated
Storage:	Store at -20°C. Avoid freeze / thaw cycles.
Stability:	Shelf life: one year from despatch.
Predicted Protein Size:	65kDa
Gene Name:	eukaryotic elongation factor, selenocysteine-tRNA specific
Database Link:	<a href="#">Entrez Gene 60678 Human P57772</a>
Background:	Predicted to enable translation elongation factor activity. Predicted to be involved in selenocysteine incorporation. Predicted to be located in cytoplasm and nucleus. Predicted to be part of ribonucleoprotein complex.
Synonyms:	EFSEC; SELB



[View online »](#)

**Product images:**


Western blot analysis of various lysates using EEFSEC Rabbit pAb (TA375730) at 1:1000 dilution. Secondary antibody: HRP-conjugated Goat anti-Rabbit IgG (H+L) (AS014) at 1:10000 dilution. Lysates/proteins: 25µg per lane. Blocking buffer: 3% nonfat dry milk in TBST. Detection: ECL Basic Kit (RM00020). Exposure time: 1s.