

## Product datasheet for **TA375729**

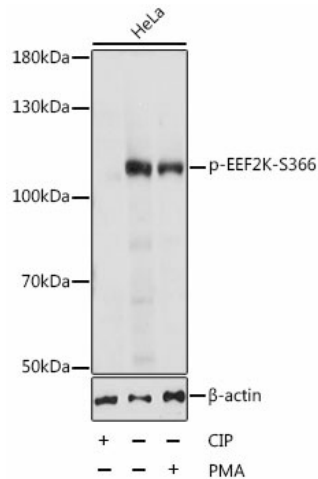
### EEF2K Rabbit Polyclonal Antibody

#### Product data:

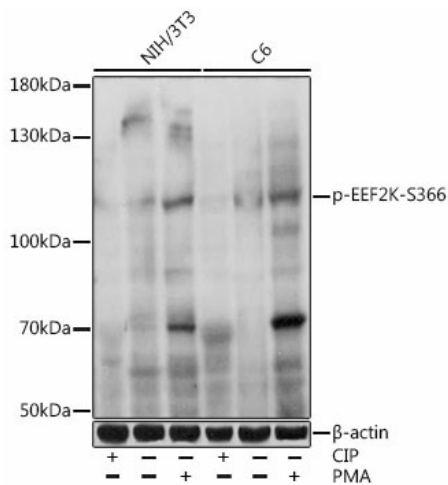
Product Type:	Primary Antibodies
Applications:	WB
Recommended Dilution:	WB,1:500 - 1:2000
Reactivity:	Human, Mouse, Rat
Modifications:	Phospho S366
Host:	Rabbit
Isotype:	IgG
Clonality:	Polyclonal
Immunogen:	A synthetic phosphorylated peptide around S366 of human EEF2K (NP_037434.1).
Formulation:	Buffer: PBS with 0.02% sodium azide,50% glycerol,pH7.3.
Concentration:	lot specific
Purification:	Affinity purification
Conjugation:	Unconjugated
Storage:	Store at -20°C. Avoid freeze / thaw cycles.
Stability:	Shelf life: one year from despatch.
Predicted Protein Size:	82kDa
Gene Name:	eukaryotic elongation factor 2 kinase
Database Link:	<a href="#">Entrez Gene 29904 Human</a> <a href="#">O00418</a>
Background:	This gene encodes a highly conserved protein kinase in the calmodulin-mediated signaling pathway that links activation of cell surface receptors to cell division. This kinase is involved in the regulation of protein synthesis. It phosphorylates eukaryotic elongation factor 2 (EEF2) and thus inhibits the EEF2 function. The activity of this kinase is increased in many cancers and may be a valid target for anti-cancer treatment.
Synonyms:	eEF-2K; HSU93850; MGC45041



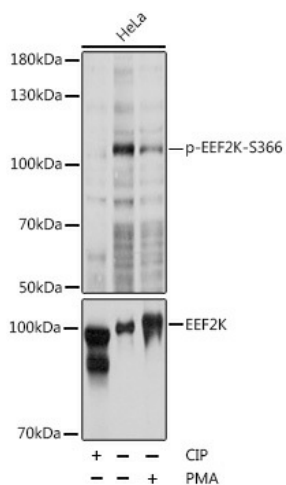
[View online »](#)

**Product images:**


Western blot analysis of extracts of HeLa cells, using Phospho-EEF2K-S366 antibody (TA375729) at 1:1000 dilution. HeLa cell lysate were treated by CIP (20ul CIP for each 400ul cell lysate) at 37°C for 1 hour or treated by PMA/TPA (200nM) for 15 minutes after serum-starvation overnight. | Secondary antibody: HRP Goat Anti-Rabbit IgG (H+L) at 1:10000 dilution. | Lysates/proteins: 25ug per lane. | Blocking buffer: 3% BSA. | Detection: ECL Basic Kit . | Exposure time: 15s.



Western blot analysis of extracts of various cell lines, using Phospho-EEF2K-S366 antibody (TA375729) at 1:1000 dilution. NIH/3T3 and C6 cells were treated by CIP(20uL/400ul) at 37°C for 1 hour or PMA/TPA (200 nM) at 37°C for 30 minutes after serum-starvation overnight. | Secondary antibody: HRP Goat Anti-Rabbit IgG (H+L) at 1:10000 dilution. | Lysates/proteins: 25ug per lane. | Blocking buffer: 3% nonfat dry milk in TBST. | Detection: ECL Basic Kit . | Exposure time: 30s.



Western blot analysis of extracts of HeLa cells, using Phospho-EEF2K-S366 pAb (TA375729) at 1:1000 dilution or EEF2K antibody (A5404). HeLa cell lysate were treated by CIP (20ul CIP for each 400ul cell lysate) at 37°C for 1 hour or treated by PMA/TPA (200nM) for 15 minutes after serum-starvation overnight. | Secondary antibody: HRP Goat Anti-Rabbit IgG (H+L) at 1:10000 dilution. | Lysates/proteins: 25ug per lane. | Blocking buffer: 3% BSA. | Detection: ECL Basic Kit. | Exposure time: 15s.