

Product datasheet for **TA375728S**

EEF2 Rabbit Polyclonal Antibody

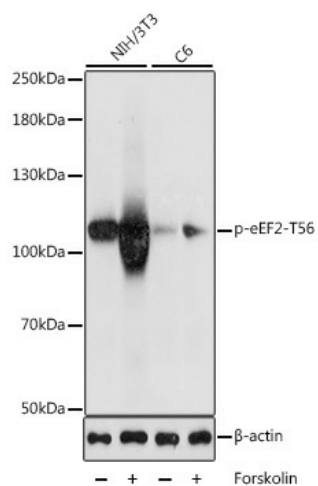
Product data:

Product Type:	Primary Antibodies
Applications:	WB
Recommended Dilution:	WB,1:500 - 1:2000
Reactivity:	Human, Mouse, Rat
Modifications:	Phospho T56
Host:	Rabbit
Isotype:	IgG
Clonality:	Polyclonal
Immunogen:	A synthetic phosphorylated peptide around T56 of human Phospho-eEF2-T56 (NP_001952.1).
Formulation:	Buffer: PBS with 0.02% sodium azide,50% glycerol,pH7.3.
Concentration:	lot specific
Purification:	Affinity purification
Conjugation:	Unconjugated
Storage:	Store at -20°C. Avoid freeze / thaw cycles.
Stability:	Shelf life: one year from despatch.
Predicted Protein Size:	95kDa
Gene Name:	eukaryotic translation elongation factor 2
Database Link:	Entrez Gene 1938 Human P13639
Background:	This gene encodes a member of the GTP-binding translation elongation factor family. This protein is an essential factor for protein synthesis. It promotes the GTP-dependent translocation of the nascent protein chain from the A-site to the P-site of the ribosome. This protein is completely inactivated by EF-2 kinase phosphorylation.
Synonyms:	EEF-2; EF-2; EF2



[View online »](#)

Product images:



Western blot analysis of extracts of various cell lines, using Phospho-eEF2-T56 antibody ([TA375728]) at 1:1000 dilution. NIH/3T3 cells were treated by Forskolin (30uM) for 30 minutes after serum-starvation overnight. C6 cells were treated by Forskolin (10uM) for 1 hour after serum-starvation overnight. | Secondary antibody: HRP Goat Anti-Rabbit IgG (H+L) at 1:10000 dilution. | Lysates/proteins: 25ug per lane. | Blocking buffer: 3% BSA. | Detection: ECL Basic Kit . | Exposure time: 5s.