

## Product datasheet for **TA375720**

### EEF1A1 Rabbit Polyclonal Antibody

#### Product data:

Product Type:	Primary Antibodies
Applications:	ICC/IF, IHC, WB
Recommended Dilution:	WB,1:500 - 1:2000 IHC,1:50 - 1:200 IF,1:50 - 1:200
Reactivity:	Human, Mouse, Rat
Modifications:	Unmodified
Host:	Rabbit
Isotype:	IgG
Clonality:	Polyclonal
Immunogen:	Recombinant fusion protein containing a sequence corresponding to amino acids 123-462 of human eEF1A1 (NP_001393.1).
Formulation:	Buffer: PBS with 0.02% sodium azide,50% glycerol,pH7.3.
Concentration:	lot specific
Purification:	Affinity purification
Conjugation:	Unconjugated
Storage:	Store at -20°C. Avoid freeze / thaw cycles.
Stability:	Shelf life: one year from despatch.
Predicted Protein Size:	47kDa/50kDa
Gene Name:	eukaryotic translation elongation factor 1 alpha 1
Database Link:	<a href="#">Entrez Gene 1915 Human P68104</a>



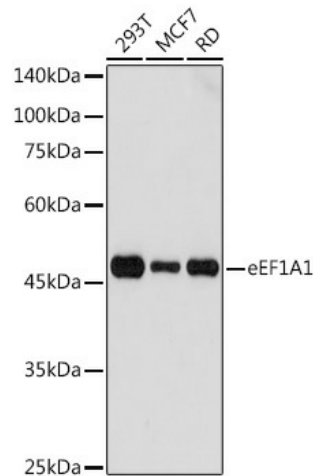
[View online »](#)

**Background:**

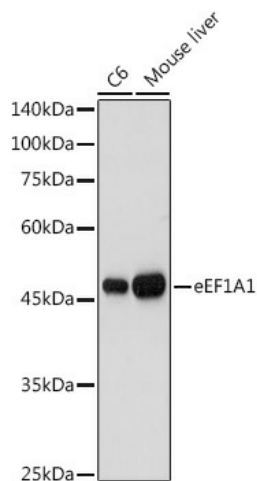
This gene encodes an isoform of the alpha subunit of the elongation factor-1 complex, which is responsible for the enzymatic delivery of aminoacyl tRNAs to the ribosome. This isoform (alpha 1) is expressed in brain, placenta, lung, liver, kidney, and pancreas, and the other isoform (alpha 2) is expressed in brain, heart and skeletal muscle. This isoform is identified as an autoantigen in 66% of patients with Felty syndrome. This gene has been found to have multiple copies on many chromosomes, some of which, if not all, represent different pseudogenes.

**Synonyms:**

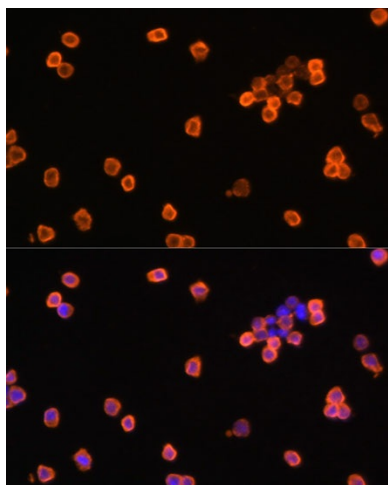
CCS-3; CCS3; EEF-1; EEF1A; eEF1A-1; EF-1-alpha-1; EF-Tu; EF1A; FLJ25721; GRAF-1EF; HNGC:16303; LENG7; MGC16224; MGC102687; MGC131894; OTTHUMP00000063804; PT11

**Product images:**

Western blot analysis of extracts of various cell lines, using eEF1A1 antibody (TA375720) at 1:1000 dilution. | Secondary antibody: HRP Goat Anti-Rabbit IgG (H+L) at 1:10000 dilution. | Lysates/proteins: 25ug per lane. | Blocking buffer: 3% nonfat dry milk in TBST. | Detection: ECL Basic Kit. | Exposure time: 3s.



Western blot analysis of extracts of various cell lines, using eEF1A1 antibody (TA375720) at 1:1000 dilution. | Secondary antibody: HRP Goat Anti-Rabbit IgG (H+L) at 1:10000 dilution. | Lysates/proteins: 25ug per lane. | Blocking buffer: 3% nonfat dry milk in TBST. | Detection: ECL Basic Kit. | Exposure time: 10s.



Immunofluorescence analysis of Raw264.7 cells using eEF1A1 antibody (TA375720) at dilution of 1:100. Blue: DAPI for nuclear staining.