

Product datasheet for **TA375711**

EDF1 Rabbit Polyclonal Antibody

Product data:

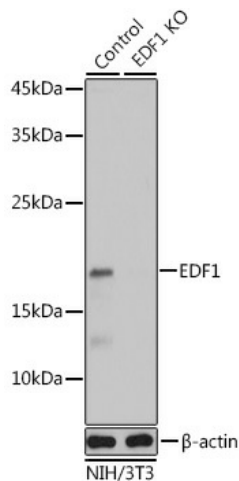
Product Type:	Primary Antibodies
Applications:	IHC, WB
Recommended Dilution:	WB,1:500 - 1:2000 IHC,1:50 - 1:100 IF,1:50 - 1:100
Reactivity:	Human, Mouse, Rat
Modifications:	Unmodified
Host:	Rabbit
Isotype:	IgG
Clonality:	Polyclonal
Immunogen:	Recombinant fusion protein containing a sequence corresponding to amino acids 1-148 of human EDF1 (NP_003783.1).
Formulation:	Buffer: PBS with 0.02% sodium azide,50% glycerol,pH7.3.
Concentration:	lot specific
Purification:	Affinity purification
Conjugation:	Unconjugated
Storage:	Store at -20°C. Avoid freeze / thaw cycles.
Stability:	Shelf life: one year from despatch.
Predicted Protein Size:	15kDa/16kDa
Gene Name:	endothelial differentiation related factor 1
Database Link:	Entrez Gene 8721 Human O60869
Background:	This gene encodes a protein that may regulate endothelial cell differentiation, lipid metabolism, and hormone-induced cardiomyocyte hypertrophy. The encoded protein has also been found to act as a transcriptional coactivator by interconnecting the general transcription factor TATA element-binding protein (TBP) and gene-specific activators. Alternate splicing results in multiple transcript variants.



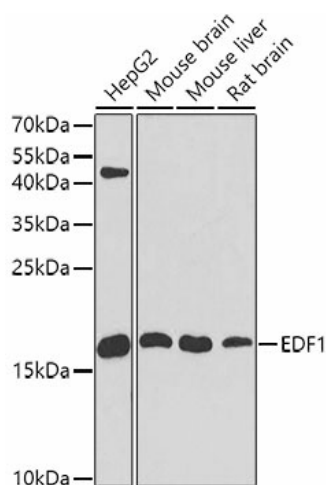
[View online »](#)

Synonyms: EDF-1; MBF1; MGC9058

Product images:



Western blot analysis of extracts from normal (control) and EDF1 Rabbit pAb knockout (KO) NIH/3T3 cells, using EDF1 Rabbit pAb antibody (TA375711) at 1:1000 dilution. |Secondary antibody: HRP Goat Anti-Rabbit IgG (H+L) at 1:10000 dilution. |Lysates/proteins: 25ug per lane. |Blocking buffer: 3% nonfat dry milk in TBST. |Detection: ECL Basic Kit . |Exposure time: 1s.



Western blot analysis of extracts of various cell lines, using EDF1 antibody (TA375711) at 1:1000 dilution. |Secondary antibody: HRP Goat Anti-Rabbit IgG (H+L) at 1:10000 dilution. |Lysates/proteins: 25ug per lane. |Blocking buffer: 3% nonfat dry milk in TBST. |Detection: ECL Basic Kit . |Exposure time: 90s.