

## Product datasheet for **TA375694S**

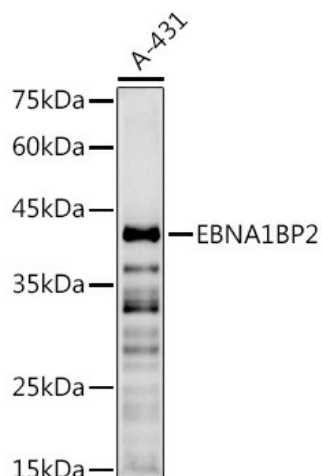
### EBNA1 binding protein 2 (EBNA1BP2) Rabbit Polyclonal Antibody

#### Product data:

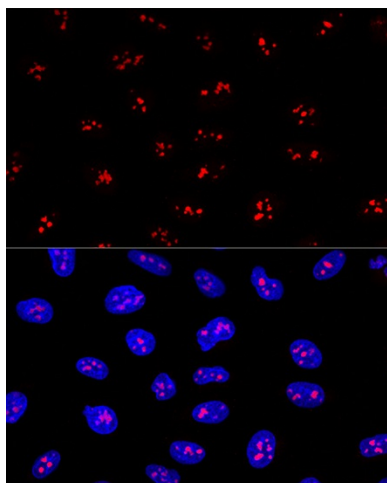
Product Type:	Primary Antibodies
Applications:	ELISA, ICC/IF, WB
Recommended Dilution:	WB, 1:1000 - 1:2000 IF/ICC, 1:50 - 1:200 ELISA, Recommended starting concentration is 1 µg/mL. Please optimize the concentration based on your specific assay requirements.
Reactivity:	Human, Mouse, Rat
Modifications:	Unmodified
Host:	Rabbit
Isotype:	IgG
Clonality:	Polyclonal
Formulation:	Buffer: PBS with 0.02% sodium azide, 50% glycerol, pH 7.3.
Concentration:	lot specific
Purification:	Affinity purification
Conjugation:	Unconjugated
Storage:	Store at -20°C. Avoid freeze / thaw cycles.
Stability:	Shelf life: one year from despatch.
Predicted Protein Size:	35kDa
Gene Name:	EBNA1 binding protein 2
Database Link:	<a href="#">Entrez Gene 10969 Human Q99848</a>
Background:	Enables RNA binding activity. Predicted to be involved in rRNA processing and ribosomal large subunit biogenesis. Located in chromosome and nucleolus.
Synonyms:	EBP2; NOBP; P40



[View online »](#)

**Product images:**


Western blot analysis of lysates from A-431 cells



Confocal immunofluorescence analysis of U2OS cells using EBNA1BP2 Rabbit pAb ([TA375694]) at dilution of 1:200. Blue: DAPI for nuclear staining.