

## Product datasheet for **TA375686**

### E2F6 Rabbit Polyclonal Antibody

#### Product data:

Product Type:	Primary Antibodies
Applications:	ChIP, ICC/IF, IP, WB
Recommended Dilution:	WB,1:500 - 1:2000 IF,1:50 - 1:200 IP,1:20 - 1:50 ChIP,1:50 - 1:200
Reactivity:	Human
Modifications:	Unmodified
Host:	Rabbit
Isotype:	IgG
Clonality:	Polyclonal
Immunogen:	Recombinant fusion protein containing a sequence corresponding to amino acids 1-281 of human E2F6 (NP_937987.2).
Formulation:	Buffer: PBS with 0.02% sodium azide,50% glycerol,pH7.3.
Concentration:	lot specific
Purification:	Affinity purification
Conjugation:	Unconjugated
Storage:	Store at -20°C. Avoid freeze / thaw cycles.
Stability:	Shelf life: one year from despatch.
Predicted Protein Size:	22kDa/28kDa/31kDa
Gene Name:	E2F transcription factor 6
Database Link:	<a href="#">Entrez Gene 1876 Human O75461</a>



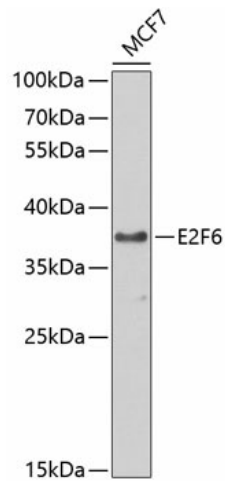
[View online »](#)

**Background:**

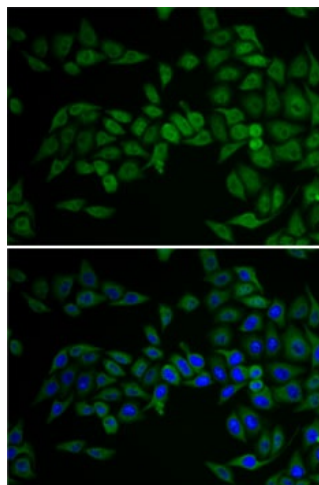
This gene encodes a member of a family of transcription factors that play a crucial role in the control of the cell cycle. The protein encoded by this gene lacks the transactivation and tumor suppressor protein association domains found in other family members, and contains a modular suppression domain that functions in the inhibition of transcription. It interacts in a complex with chromatin modifying factors. There are pseudogenes for this gene on chromosomes 22 and X. Alternative splicing results in multiple transcript variants.

**Synonyms:**

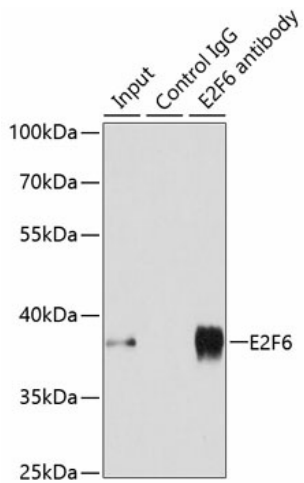
E2F-6; MGC111545

**Product images:**


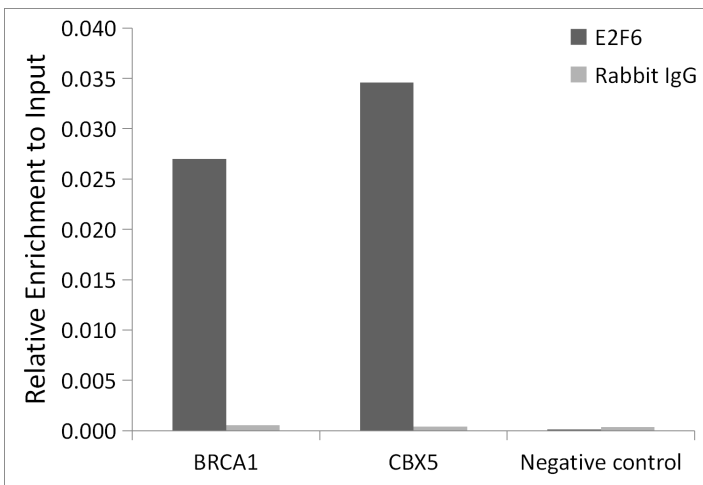
Western blot analysis of extracts of MCF-7 cells, using E2F6 antibody (TA375686) at 1:1000 dilution. | Secondary antibody: HRP Goat Anti-Rabbit IgG (H+L) at 1:10000 dilution. | Lysates/proteins: 25ug per lane. | Blocking buffer: 3% nonfat dry milk in TBST. | Detection: ECL Basic Kit . | Exposure time: 90s.



Immunofluorescence analysis of U2OS cells using E2F6 antibody (TA375686). Blue: DAPI for nuclear staining.



Immunoprecipitation analysis of 200ug extracts of MCF-7 cells using 3ug E2F6 antibody (TA375686). Western blot was performed from the immunoprecipitate using E2F6 antibody (TA375686) at a dilution of 1:500.



Chromatin immunoprecipitation analysis of extracts of 293T cells, using E2F6 antibody (TA375686) and rabbit IgG. The amount of immunoprecipitated DNA was checked by quantitative PCR. Histogram was constructed by the ratios of the immunoprecipitated DNA to the input.