

Product datasheet for **TA375672S**

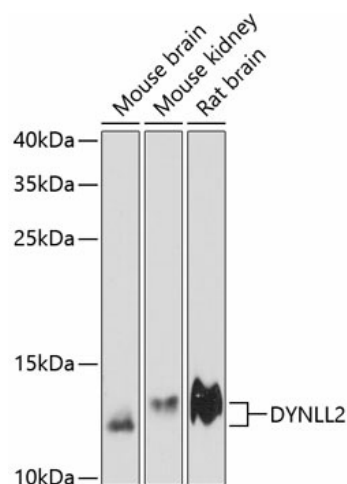
Dynein (DYNLL2) Rabbit Polyclonal Antibody

Product data:

Product Type:	Primary Antibodies
Applications:	ELISA, WB
Recommended Dilution:	WB, 1:500 - 1:2000 ELISA, Recommended starting concentration is 1 µg/mL. Please optimize the concentration based on your specific assay requirements.
Reactivity:	Mouse, Rat
Modifications:	Unmodified
Host:	Rabbit
Isotype:	IgG
Clonality:	Polyclonal
Formulation:	Buffer: PBS with 0.02% sodium azide, 50% glycerol, pH 7.3.
Concentration:	lot specific
Purification:	Affinity purification
Conjugation:	Unconjugated
Storage:	Store at -20°C. Avoid freeze / thaw cycles.
Stability:	Shelf life: one year from despatch.
Predicted Protein Size:	10kDa
Gene Name:	dynein light chain LC8-type 2
Database Link:	Q96FJ2
Background:	Predicted to enable dynein intermediate chain binding activity and dynein light intermediate chain binding activity. Predicted to be involved in cilium assembly. Located in 9+0 non-motile cilium and centrosome. Is active in glutamatergic synapse and postsynapse.
Synonyms:	DLC2; DNCL1B; MGC17810; RSPH22



[View online »](#)

Product images:


Western blot analysis of various lysates using DYNLL2 Rabbit pAb (TA375672S) at 1:3000 dilution.

Secondary antibody: HRP-conjugated Goat anti-Rabbit IgG (H+L) (AS014) at 1:10000 dilution.

Lysates/proteins: 25µg per lane.

Blocking buffer: 3% nonfat dry milk in TBST.

Detection: ECL Enhanced Kit (RM00021).

Exposure time: 90s.