

Product datasheet for **TA375660S**

DUSP9 Rabbit Polyclonal Antibody

Product data:

Product Type:	Primary Antibodies
Applications:	ELISA, ICC/IF, WB
Recommended Dilution:	WB, 1:200 - 1:2000 IF/ICC, 1:20 - 1:100 ELISA, Recommended starting concentration is 1 µg/mL. Please optimize the concentration based on your specific assay requirements.
Reactivity:	Human, Mouse
Modifications:	Unmodified
Host:	Rabbit
Isotype:	IgG
Clonality:	Polyclonal
Formulation:	Buffer: PBS with 0.02% sodium azide, 50% glycerol, pH 7.3.
Concentration:	lot specific
Purification:	Affinity purification
Conjugation:	Unconjugated
Storage:	Store at -20°C. Avoid freeze / thaw cycles.
Stability:	Shelf life: one year from despatch.
Predicted Protein Size:	42kDa
Gene Name:	dual specificity phosphatase 9
Database Link:	Entrez Gene 1852 Human Q99956



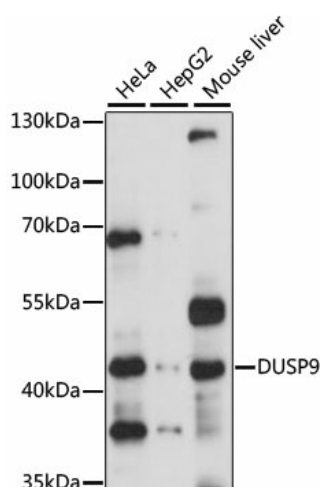
[View online »](#)

Background:

The protein encoded by this gene is a member of the dual specificity protein phosphatase subfamily. These phosphatases inactivate their target kinases by dephosphorylating both the phosphoserine/threonine and phosphotyrosine residues. They negatively regulate members of the mitogen-activated protein (MAP) kinase superfamily (MAPK/ERK, SAPK/JNK, p38), which is associated with cellular proliferation and differentiation. Different members of the family of dual specificity phosphatases show distinct substrate specificities for various MAP kinases, different tissue distribution and subcellular localization, and different modes of inducibility of their expression by extracellular stimuli. This gene product shows selectivity for members of the ERK family of MAP kinases and is localized to the cytoplasm and nucleus. Aberrant expression of this gene is associated with type 2 diabetes and cancer progression in several cell types. Alternate splicing results in multiple transcript variants.

Synonyms:

MKP-4; MKP4; OTTHUMP00000025953

Product images:


Immunofluorescence analysis of HepG2 cells using DUSP9 Rabbit pAb ([TA375660]) at dilution of 1:200 (40x lens). Secondary antibody: Cy3-conjugated Goat anti-Rabbit IgG (H+L) (AS007) at 1:500 dilution. Blue: DAPI for nuclear staining.