

## Product datasheet for **TA375651**

### DUSP15 Rabbit Polyclonal Antibody

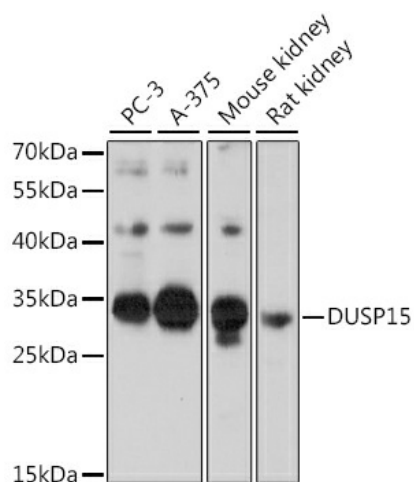
#### Product data:

Product Type:	Primary Antibodies
Applications:	ICC/IF, WB
Recommended Dilution:	WB,1:500 - 1:2000
Reactivity:	Human, Mouse, Rat
Host:	Rabbit
Isotype:	IgG
Clonality:	Polyclonal
Immunogen:	Recombinant fusion protein containing a sequence corresponding to amino acids 10-90 of human DUSP15 (NP_542178.2).
Formulation:	Buffer: PBS with 0.02% sodium azide,50% glycerol,pH7.3.
Concentration:	lot specific
Purification:	Affinity purification
Conjugation:	Unconjugated
Storage:	Store at -20°C. Avoid freeze / thaw cycles.
Stability:	Shelf life: one year from despatch.
Predicted Protein Size:	14kDa/25kDa/26kDa/31kDa
Gene Name:	dual specificity phosphatase 15
Database Link:	<a href="#">Entrez Gene 128853 Human Q9H1R2</a>
Background:	The protein encoded by this gene has both protein-tyrosine phosphatase activity and serine/threonine-specific phosphatase activity, and therefore is known as a dual specificity phosphatase. This protein may function in the differentiation of oligodendrocytes. Alternative splicing results in multiple transcript variants.
Synonyms:	bA243J16.6; C20orf57; FLJ40111; VHY



[View online »](#)

## Product images:



Western blot analysis of extracts of various cell lines, using DUSP15 antibody (TA375651) at 1:1000 dilution. | Secondary antibody: HRP Goat Anti-Rabbit IgG (H+L) at 1:10000 dilution. | Lysates/proteins: 25ug per lane. | Blocking buffer: 3% nonfat dry milk in TBST. | Detection: ECL Basic Kit . | Exposure time: 30s.