

## Product datasheet for **TA375649S**

### DUSP13 Rabbit Polyclonal Antibody

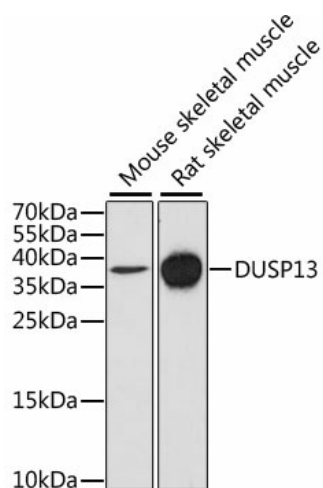
#### Product data:

Product Type:	Primary Antibodies
Applications:	ELISA, WB
Recommended Dilution:	WB, 1:500 - 1:2000 ELISA, Recommended starting concentration is 1 µg/mL. Please optimize the concentration based on your specific assay requirements.
Reactivity:	Mouse, Rat
Modifications:	Unmodified
Host:	Rabbit
Isotype:	IgG
Clonality:	Polyclonal
Formulation:	Buffer: PBS with 0.02% sodium azide, 50% glycerol, pH 7.3.
Concentration:	lot specific
Purification:	Affinity purification
Conjugation:	Unconjugated
Storage:	Store at -20°C. Avoid freeze / thaw cycles.
Stability:	Shelf life: one year from despatch.
Predicted Protein Size:	6kDa/7kDa/9kDa/17kDa/20kDa/22kDa/27kDa
Gene Name:	dual specificity phosphatase 13
Database Link:	<a href="#">Q6B8I1</a>
Background:	Members of the protein-tyrosine phosphatase superfamily cooperate with protein kinases to regulate cell proliferation and differentiation. This gene encodes a dual specificity phosphatase that acts on both phosphotyrosine and phosphoserine/threonine residues. The encoded protein is expressed in testis.
Synonyms:	BEDP; DUSP13A; DUSP13B; FLJ32450; MDSP; OTTHUMP00000019875; SKRP4; TMDP



[View online »](#)

## Product images:



Western blot analysis of various lysates using DUSP13 Rabbit pAb ([TA375649]) at 1:1000 dilution.

Secondary antibody: HRP-conjugated Goat anti-Rabbit IgG (H+L) (AS014) at 1:10000 dilution.

Lysates/proteins: 25µg per lane.

Blocking buffer: 3% nonfat dry milk in TBST.

Detection: ECL Basic Kit (RM00020).

Exposure time: 90s.