

## Product datasheet for **TA375644S**

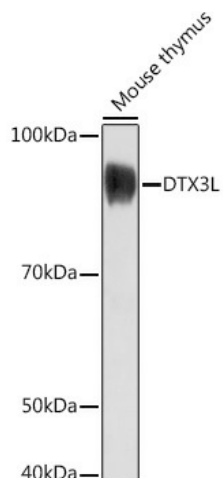
### DTX3L Rabbit Polyclonal Antibody

#### Product data:

|                       |  |
|-----------------------|--|
| Product Type:         | Primary Antibodies   |
| Applications:         | ICC/IF, WB   |
| Recommended Dilution: | WB,1:500 - 1:2000<br>IF,1:50 - 1:200   |
| Reactivity:           | Human, Mouse, Rat  |
| Host:                 | Rabbit   |
| Isotype:              | IgG  |
| Clonality:            | Polyclonal   |
| Immunogen:            | Recombinant protein of human DTX3L.  |
| Formulation:          | Buffer: PBS with 0.02% sodium azide,50% glycerol,pH7.3.  |
| Concentration:        | lot specific   |
| Purification:         | Affinity purification  |
| Conjugation:          | Unconjugated   |
| Storage:              | Store at -20°C. Avoid freeze / thaw cycles.  |
| Stability:            | Shelf life: one year from despatch.  |
| Gene Name:            | deltex 3 like, E3 ubiquitin ligase   |
| Database Link:        | <a href="#">Entrez Gene 151636 Human Q8TDB6</a>  |
| Background:           | DTX3L functions as an E3 ubiquitin ligase (Takeyama et al., 2003 [PubMed 12670957]).<br>[supplied by OMIM, Nov 2009] |
| Synonyms:             | BBAP; Rhysin-2; Rhysin2  |



[View online »](#)

**Product images:**

Western blot analysis of extracts of Mouse thymus, using DTX3L Rabbit pAb ([TA375644]) at 1:1000 dilution. | Secondary antibody: HRP Goat Anti-Rabbit IgG (H+L) at 1:10000 dilution. | Lysates/proteins: 25ug per lane. | Blocking buffer: 3% nonfat dry milk in TBST. | Detection: ECL Basic Kit . | Exposure time: 180s.