

## Product datasheet for **TA375622S**

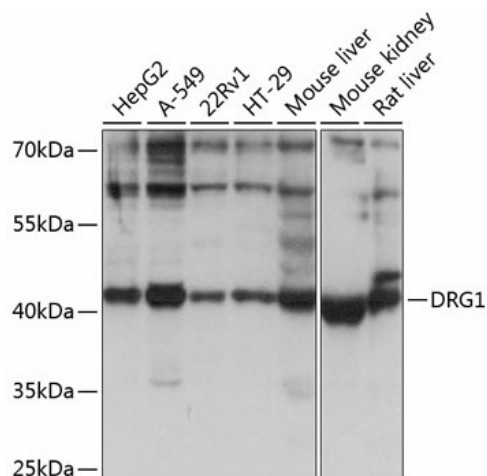
### DRG1 Rabbit Polyclonal Antibody

#### Product data:

Product Type:	Primary Antibodies
Applications:	ELISA, WB
Recommended Dilution:	WB, 1:500 - 1:2000 ELISA, Recommended starting concentration is 1 µg/mL. Please optimize the concentration based on your specific assay requirements.
Reactivity:	Human, Mouse, Rat
Modifications:	Unmodified
Host:	Rabbit
Isotype:	IgG
Clonality:	Polyclonal
Formulation:	Buffer: PBS with 0.02% sodium azide, 50% glycerol, pH 7.3.
Concentration:	lot specific
Purification:	Affinity purification
Conjugation:	Unconjugated
Storage:	Store at -20°C. Avoid freeze / thaw cycles.
Stability:	Shelf life: one year from despatch.
Predicted Protein Size:	41kDa
Gene Name:	developmentally regulated GTP binding protein 1
Database Link:	<a href="#">Entrez Gene 4733 Human Q9Y295</a>
Background:	Enables several functions, including GTPase activity; identical protein binding activity; and potassium ion binding activity. Involved in positive regulation of microtubule polymerization and regulation of mitotic spindle assembly. Located in cytosol and nuclear body. Part of polysome.
Synonyms:	C6orf55; DKFZp434N1827; DRG-1; LIP5; NEDD-3; NEDD3; SBP1; VTA1



[View online »](#)

**Product images:**


Western blot analysis of various lysates using DRG1 Rabbit pAb (TA375622S) at 1:1000 dilution. Secondary antibody: HRP-conjugated Goat anti-Rabbit IgG (H+L) (AS014) at 1:10000 dilution. Lysates/proteins: 25µg per lane. Blocking buffer: 3% nonfat dry milk in TBST. Detection: ECL Basic Kit (RM00020). Exposure time: 5s.