

Product datasheet for **TA375622**

DRG1 Rabbit Polyclonal Antibody

Product data:

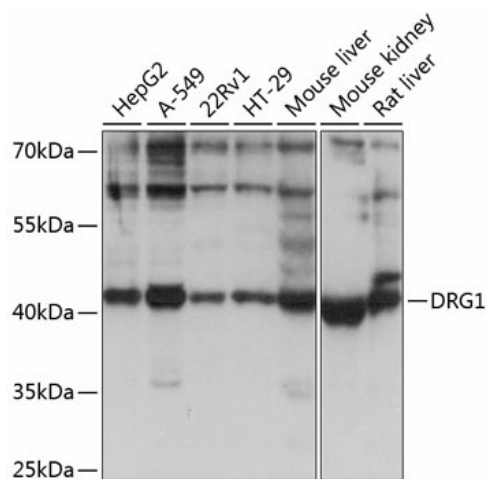
Product Type:	Primary Antibodies
Applications:	WB
Recommended Dilution:	WB,1:500 - 1:2000
Reactivity:	Human, Mouse, Rat
Modifications:	Unmodified
Host:	Rabbit
Isotype:	IgG
Clonality:	Polyclonal
Immunogen:	Recombinant fusion protein containing a sequence corresponding to amino acids 158-367 of human DRG1 (NP_004138.1).
Formulation:	Buffer: PBS with 0.02% sodium azide,50% glycerol,pH7.3.
Concentration:	lot specific
Purification:	Affinity purification
Conjugation:	Unconjugated
Storage:	Store at -20°C. Avoid freeze / thaw cycles.
Stability:	Shelf life: one year from despatch.
Predicted Protein Size:	40kDa
Gene Name:	developmentally regulated GTP binding protein 1
Database Link:	Entrez Gene 4733 Human Q9Y295
Background:	Catalyzes the conversion of GTP to GDP through hydrolysis of the gamma-phosphate bond in GTP. Appears to have an intrinsic GTPase activity that is stimulated by ZC3H15/DFRP1 binding likely by increasing the affinity for the potassium ions. When hydroxylated at C-3 of 'Lys-22' by JMJD7, may bind to RNA and play a role in translation. Binds to microtubules and promotes microtubule polymerization and stability that are required for mitotic spindle assembly during prophase to anaphase transition. GTPase activity is not necessary for these microtubule-related functions.



[View online »](#)

Synonyms: C6orf55; DKFZp434N1827; DRG-1; LIP5; NEDD-3; NEDD3; SBP1; VTA1

Product images:



Western blot analysis of extracts of various cell lines, using DRG1 antibody (TA375622) at 1:1000 dilution. | Secondary antibody: HRP Goat Anti-Rabbit IgG (H+L) at 1:10000 dilution. | Lysates/proteins: 25ug per lane. | Blocking buffer: 3% nonfat dry milk in TBST. | Detection: ECL Basic Kit . | Exposure time: 5s.