

## Product datasheet for **TA375614**

### DR1 Rabbit Polyclonal Antibody

#### Product data:

|                         |   |
|-------------------------|---|
| Product Type:           | Primary Antibodies  |
| Applications:           | ICC/IF, IHC, WB   |
| Recommended Dilution:   | WB,1:500 - 1:2000<br>IHC,1:50 - 1:200<br>IF,1:50 - 1:200  |
| Reactivity:             | Human, Mouse  |
| Modifications:          | Unmodified  |
| Host:                   | Rabbit  |
| Isotype:                | IgG   |
| Clonality:              | Polyclonal  |
| Immunogen:              | Recombinant fusion protein containing a sequence corresponding to amino acids 1-176 of human DR1 (NP_001929.1). |
| Formulation:            | Buffer: PBS with 0.02% sodium azide,50% glycerol,pH7.3.   |
| Concentration:          | lot specific  |
| Purification:           | Affinity purification   |
| Conjugation:            | Unconjugated  |
| Storage:                | Store at -20°C. Avoid freeze / thaw cycles.   |
| Stability:              | Shelf life: one year from despatch.   |
| Predicted Protein Size: | 19kDa   |
| Gene Name:              | down-regulator of transcription 1   |
| Database Link:          | <a href="#">Entrez Gene 1810 Human Q01658</a>   |



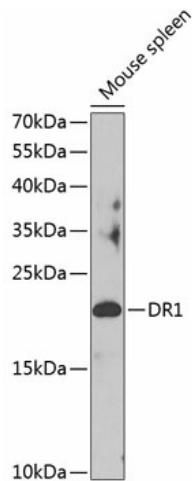
[View online »](#)

**Background:**

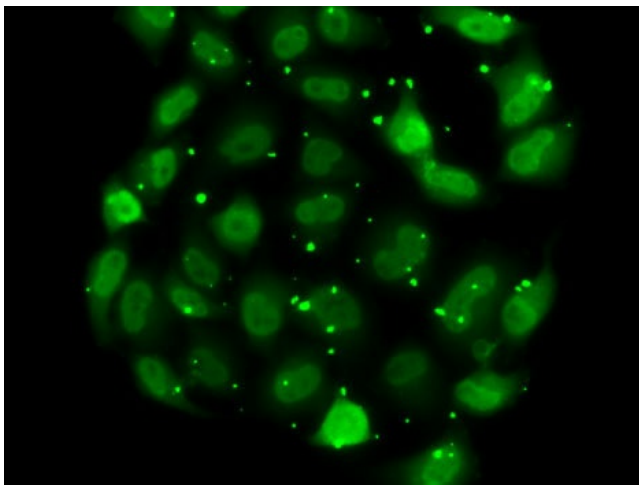
This gene encodes a TBP- (TATA box-binding protein) associated phosphoprotein that represses both basal and activated levels of transcription. The encoded protein is phosphorylated in vivo and this phosphorylation affects its interaction with TBP. This protein contains a histone fold motif at the amino terminus, a TBP-binding domain, and a glutamine- and alanine-rich region. The binding of DR1 repressor complexes to TBP-promoter complexes may establish a mechanism in which an altered DNA conformation, together with the formation of higher order complexes, inhibits the assembly of the preinitiation complex and controls the rate of RNA polymerase II transcription.

**Synonyms:**

NC2; NC2-BETA; OTTHUMP00000012557

**Product images:**

Western blot analysis of extracts of mouse spleen, using DR1 antibody (TA375614) at 1:1000 dilution. | Secondary antibody: HRP Goat Anti-Rabbit IgG (H+L) at 1:10000 dilution. | Lysates/proteins: 25ug per lane. | Blocking buffer: 3% nonfat dry milk in TBST. | Detection: ECL Basic Kit. | Exposure time: 90s.



Immunofluorescence analysis of MCF7 cells using DR1 antibody (TA375614).