

## Product datasheet for **TA375613**

### CRMP5 (DPYSL5) Rabbit Polyclonal Antibody

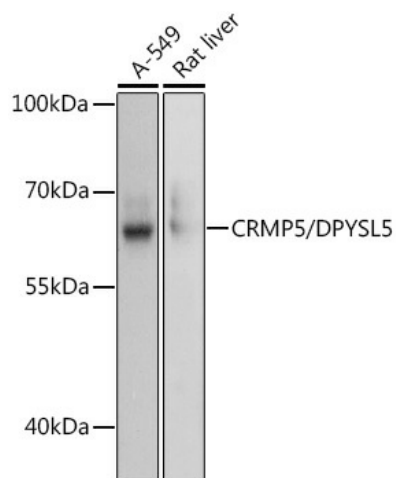
#### Product data:

Product Type:	Primary Antibodies
Applications:	WB
Recommended Dilution:	WB,1:500 - 1:2000
Reactivity:	Human, Rat
Modifications:	Unmodified
Host:	Rabbit
Isotype:	IgG
Clonality:	Polyclonal
Immunogen:	Recombinant fusion protein containing a sequence corresponding to amino acids 445-564 of human CRMP5/CRMP5/DPYSL5 (NP_064519.2).
Formulation:	Buffer: PBS with 0.02% sodium azide,50% glycerol,pH7.3.
Concentration:	lot specific
Purification:	Affinity purification
Conjugation:	Unconjugated
Storage:	Store at -20°C. Avoid freeze / thaw cycles.
Stability:	Shelf life: one year from despatch.
Predicted Protein Size:	61kDa
Gene Name:	dihydropyrimidinase like 5
Database Link:	<a href="#">Entrez Gene 56896 Human Q9BPU6</a>
Background:	This gene encodes a member of the CRMP (collapsing response mediator protein) family thought to be involved in neural development. Antibodies to the encoded protein were found in some patients with neurologic symptoms who had paraneoplastic syndrome. A pseudogene of this gene is found on chromosome 11. Multiple alternatively spliced variants, encoding the same protein, have been identified.
Synonyms:	CRAM; CRMP-5; CRMP5; DRP-5; FLJ45383; OTTHUMP00000200913; Ulip6



[View online »](#)

## Product images:



Western blot analysis of extracts of various cell lines, using CRMP5/CRMP5/DPYSL5 antibody (TA375613) at 1:3000 dilution. | Secondary antibody: HRP Goat Anti-Rabbit IgG (H+L) at 1:10000 dilution. | Lysates/proteins: 25ug per lane. | Blocking buffer: 3% nonfat dry milk in TBST. | Detection: ECL Basic Kit . | Exposure time: 1s.