

## Product datasheet for **TA375610S**

### CRMP4 (DPYSL3) Rabbit Polyclonal Antibody

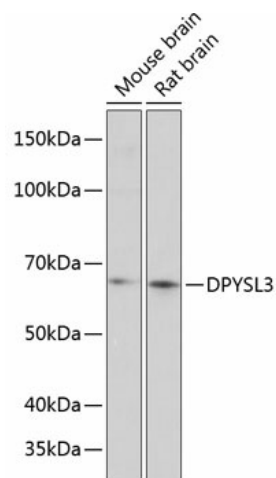
#### Product data:

Product Type:	Primary Antibodies
Applications:	ELISA, WB
Recommended Dilution:	WB, 1:500 - 1:2000 ELISA, Recommended starting concentration is 1 µg/mL. Please optimize the concentration based on your specific assay requirements.
Reactivity:	Mouse, Rat
Modifications:	Unmodified
Host:	Rabbit
Isotype:	IgG
Clonality:	Polyclonal
Formulation:	Buffer: PBS with 0.02% sodium azide, 50% glycerol, pH 7.3.
Concentration:	lot specific
Purification:	Affinity purification
Conjugation:	Unconjugated
Storage:	Store at -20°C. Avoid freeze / thaw cycles.
Stability:	Shelf life: one year from despatch.
Predicted Protein Size:	62kDa
Gene Name:	dihydropyrimidinase like 3
Database Link:	<a href="#">Q14195</a>
Background:	Enables filamin binding activity. Predicted to be involved in several processes, including actin filament organization; regulation of plasma membrane bounded cell projection organization; and response to axon injury. Predicted to act upstream of or within nervous system development. Predicted to be located in several cellular components, including cell body; growth cone; and lamellipodium. Predicted to be part of filamentous actin. Predicted to be active in synapse. Predicted to colocalize with exocytic vesicle.
Synonyms:	CRMP-4; CRMP4; DRP-3; DRP3; LCRMP; ULIP



[View online »](#)

## Product images:



Western blot analysis of various lysates using DPYSL3 Rabbit pAb ([TA375610]) at 1:1000 dilution.

Secondary antibody: HRP-conjugated Goat anti-Rabbit IgG (H+L) (AS014) at 1:10000 dilution.

Lysates/proteins: 25µg per lane.

Blocking buffer: 3% nonfat dry milk in TBST.

Detection: ECL Basic Kit (RM00020).

Exposure time: 3min.