

Product datasheet for **TA375610**

CRMP4 (DPYSL3) Rabbit Polyclonal Antibody

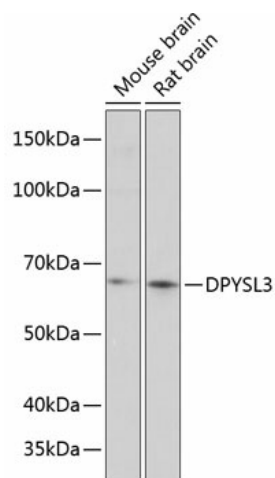
Product data:

Product Type:	Primary Antibodies
Applications:	WB
Recommended Dilution:	WB,1:500 - 1:2000
Reactivity:	Mouse, Rat
Modifications:	Unmodified
Host:	Rabbit
Isotype:	IgG
Clonality:	Polyclonal
Immunogen:	Recombinant fusion protein containing a sequence corresponding to amino acids 1-280 of human DPYSL3 (NP_001184223.1).
Formulation:	Buffer: PBS with 0.02% sodium azide,50% glycerol,pH7.3.
Concentration:	lot specific
Purification:	Affinity purification
Conjugation:	Unconjugated
Storage:	Store at -20°C. Avoid freeze / thaw cycles.
Stability:	Shelf life: one year from despatch.
Predicted Protein Size:	61kDa/73kDa
Gene Name:	dihydropyrimidinase like 3
Database Link:	Q14195
Background:	Collapsin response mediator protein 4 is an enzyme that in humans is encoded by the CRMP4 gene.Mostly expressed in heart;skeletal muscle;fetal brain and spinal cord.It have phosphorylation sites on Ser-522 by DYRK2 promotes subsequent phosphorylation on Thr-509; Thr-514 and Ser-518 by GSK3.
Synonyms:	CRMP-4; CRMP4; DRP-3; DRP3; LCRMP; ULIP



[View online »](#)

Product images:



Western blot analysis of extracts of various cell lines, using DPYSL3 Polyclonal Antibody (TA375610) at 1:1000 dilution. | Secondary antibody: HRP Goat Anti-Rabbit IgG (H+L) at 1:10000 dilution. | Lysates/proteins: 25ug per lane. | Blocking buffer: 3% nonfat dry milk in TBST. | Detection: ECL Basic Kit . | Exposure time: 3min.