

Product datasheet for **TA375609**

CRMP2 (DPYSL2) Rabbit Polyclonal Antibody

Product data:

Product Type:	Primary Antibodies
Applications:	WB
Recommended Dilution:	WB,1:500 - 1:2000
Reactivity:	Human, Mouse, Rat
Modifications:	Phospho T514
Host:	Rabbit
Isotype:	IgG
Clonality:	Polyclonal
Immunogen:	A phospho specific peptide corresponding to residues surrounding T514 of human CRMP2/DPYSL2
Formulation:	Buffer: PBS with 0.02% sodium azide,50% glycerol,pH7.3.
Concentration:	lot specific
Purification:	Affinity purification
Conjugation:	Unconjugated
Storage:	Store at -20°C. Avoid freeze / thaw cycles.
Stability:	Shelf life: one year from despatch.
Predicted Protein Size:	58kDa/62kDa
Gene Name:	dihydropyrimidinase like 2
Database Link:	Entrez Gene 1808 Human Q16555

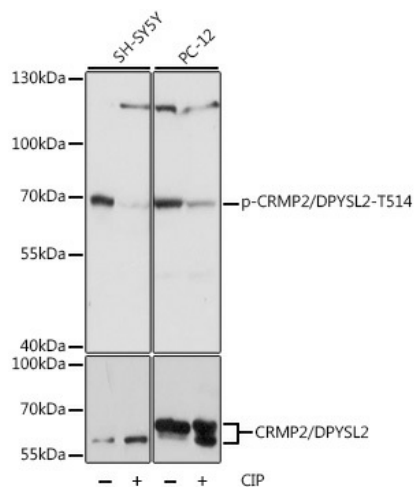
Background: This gene encodes a member of the collapsin response mediator protein family. Collapsin response mediator proteins form homo- and hetero-tetramers and facilitate neuron guidance, growth and polarity. The encoded protein promotes microtubule assembly and is required for Sema3A-mediated growth cone collapse, and also plays a role in synaptic signaling through interactions with calcium channels. This gene has been implicated in multiple neurological disorders, and hyperphosphorylation of the encoded protein may play a key role in the development of Alzheimer's disease. Alternatively spliced transcript variants encoding multiple isoforms have been observed for this gene.



[View online »](#)

Synonyms: CRMP-2; CRMP2; DHPRP2; DRP-2; DRP2; N2A3

Product images:



Western blot analysis of extracts of various cell lines, using Phospho-CRMP2/DPYSL2-T514 antibody (TA375609) at 1:1000 dilution or CRMP2/DPYSL2 antibody (A14570). SH-SY5Y cells were treated by CIP(20uL/400ul) at 37°C for 1 hour. PC-12 cells were treated by CIP(20uL/400ul) at 37°C for 1 hour. |Secondary antibody: HRP Goat Anti-Rabbit IgG (H+L) at 1:10000 dilution. |Lysates/proteins: 25ug per lane. |Blocking buffer: 3% BSA. |Detection: ECL Basic Kit . |Exposure time: 1s.