

Product datasheet for **TA375577S**

DOCK2 Rabbit Polyclonal Antibody

Product data:

Product Type:	Primary Antibodies
Applications:	ELISA, ICC/IF, IP, WB
Recommended Dilution:	WB, 1:500 - 1:1000 IF/ICC, 1:50 - 1:200 IP, 0.5µg-4µg antibody for 200µg-400µg extracts of whole cells ELISA, Recommended starting concentration is 1 µg/mL. Please optimize the concentration based on your specific assay requirements.
Reactivity:	Human, Mouse
Modifications:	Unmodified
Host:	Rabbit
Isotype:	IgG
Clonality:	Polyclonal
Formulation:	Buffer: PBS with 0.02% sodium azide, 50% glycerol, pH 7.3.
Concentration:	lot specific
Purification:	Affinity purification
Conjugation:	Unconjugated
Storage:	Store at -20°C. Avoid freeze / thaw cycles.
Stability:	Shelf life: one year from despatch.
Predicted Protein Size:	212kDa
Gene Name:	dedicator of cytokinesis 2
Database Link:	Entrez Gene 1794 Human Q92608



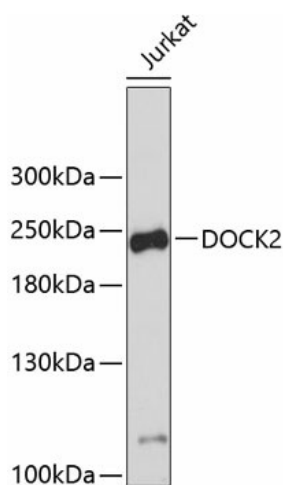
[View online »](#)

Background:

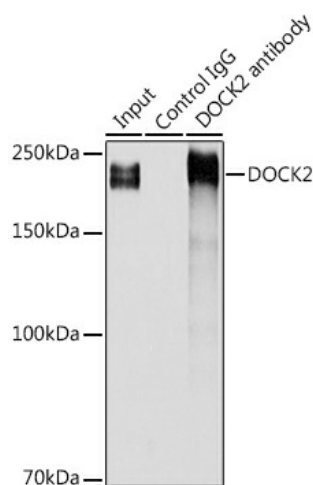
The protein encoded by this gene belongs to the CDM protein family. It is specifically expressed in hematopoietic cells and is predominantly expressed in peripheral blood leukocytes. The protein is involved in remodeling of the actin cytoskeleton required for lymphocyte migration in response to chemokine signaling. It activates members of the Rho family of GTPases, for example RAC1 and RAC2, by acting as a guanine nucleotide exchange factor (GEF) to exchange bound GDP for free GTP. Mutations in this gene result in immunodeficiency 40 (IMD40), a combined form of immunodeficiency that affects T cell number and function, also with variable defects in B cell and NK cell function.

Synonyms:

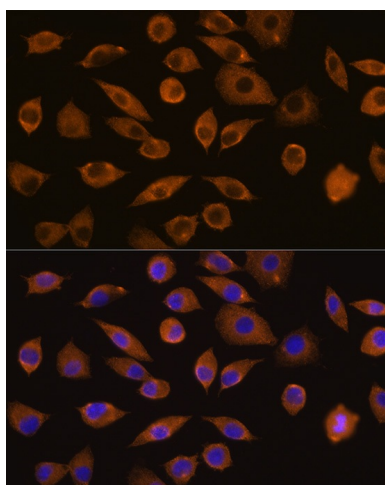
FLJ46592; KIAA0209

Product images:


Western blot analysis of lysates from Jurkat cells



Immunoprecipitation analysis of 300 µg extracts of Jurkat cells using 3 µg DOCK2 antibody ([TA375577]). Western blot was performed from the immunoprecipitate using DOCK2 antibody ([TA375577]) at a dilution of 1:500.



Immunofluorescence analysis of L929 cells using DOCK2 Rabbit pAb ([TA375577]) at dilution of 1:100 (40x lens). Secondary antibody: Cy3-conjugated Goat anti-Rabbit IgG (H+L) (AS007) at 1:500 dilution. Blue: DAPI for nuclear staining.