

Product datasheet for **TA375577**

DOCK2 Rabbit Polyclonal Antibody

Product data:

Product Type:	Primary Antibodies
Applications:	ICC/IF, IP, WB
Recommended Dilution:	WB,1:500 - 1:1000 IF,1:50 - 1:200 IP,1:50 - 1:100
Reactivity:	Human, Mouse
Modifications:	Unmodified
Host:	Rabbit
Isotype:	IgG
Clonality:	Polyclonal
Immunogen:	Recombinant fusion protein containing a sequence corresponding to amino acids 1551-1830 of human DOCK2 (NP_004937.1).
Formulation:	Buffer: PBS with 0.02% sodium azide,50% glycerol,pH7.3.
Concentration:	lot specific
Purification:	Affinity purification
Conjugation:	Unconjugated
Storage:	Store at -20°C. Avoid freeze / thaw cycles.
Stability:	Shelf life: one year from despatch.
Predicted Protein Size:	38kDa/211kDa
Gene Name:	dedicator of cytokinesis 2
Database Link:	Entrez Gene 1794 Human Q92608

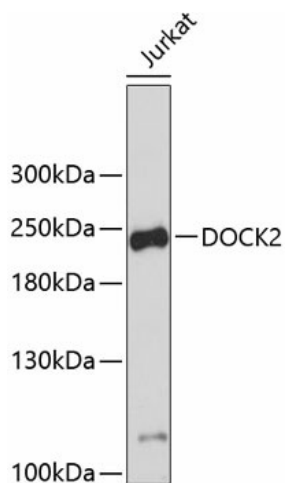
Background: The protein encoded by this gene belongs to the CDM protein family. It is specifically expressed in hematopoietic cells and is predominantly expressed in peripheral blood leukocytes. The protein is involved in remodeling of the actin cytoskeleton required for lymphocyte migration in response to chemokine signaling. It activates members of the Rho family of GTPases, for example RAC1 and RAC2, by acting as a guanine nucleotide exchange factor (GEF) to exchange bound GDP for free GTP.



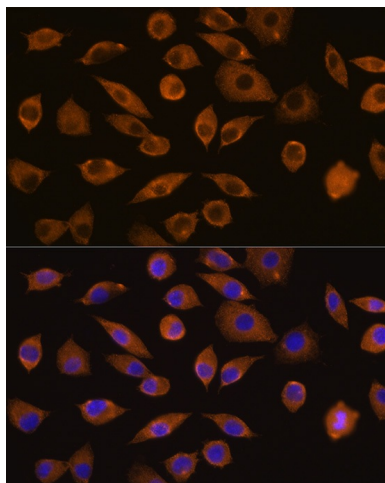
[View online »](#)

Synonyms: FLJ46592; KIAA0209

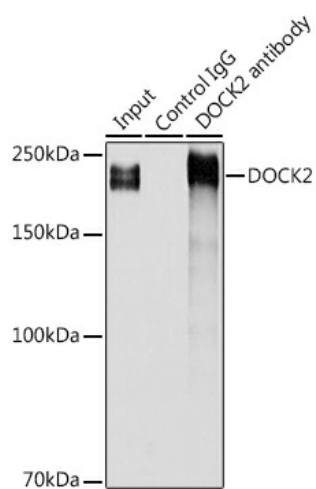
Product images:



Western blot analysis of extracts of Jurkat cells, using DOCK2 antibody (TA375577). | Secondary antibody: HRP Goat Anti-Rabbit IgG (H+L) at 1:10000 dilution. | Lysates/proteins: 25ug per lane. | Blocking buffer: 3% nonfat dry milk in TBST.



Immunofluorescence analysis of L929 cells using DOCK2 Rabbit pAb (TA375577) at dilution of 1:100 (40x lens). Blue: DAPI for nuclear staining.



Immunoprecipitation analysis of 300ug extracts of Jurkat cells using 3ug DOCK2 antibody (TA375577). Western blot was performed from the immunoprecipitate using DOCK2 antibody (TA375577) at a dilution of 1:500.