

## Product datasheet for **TA375547**

### DNase gamma (DNASE1L3) Rabbit Polyclonal Antibody

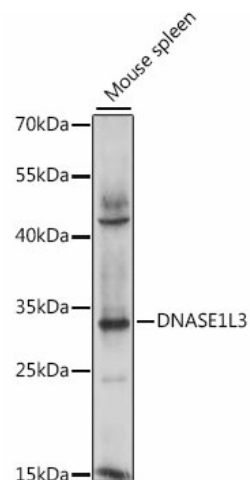
#### Product data:

Product Type:	Primary Antibodies
Applications:	WB
Recommended Dilution:	WB,1:500 - 1:2000
Reactivity:	Mouse
Host:	Rabbit
Isotype:	IgG
Clonality:	Polyclonal
Immunogen:	Recombinant fusion protein containing a sequence corresponding to amino acids 21-281 of human DNASE1L3 (NP_004935.1).
Formulation:	Buffer: PBS with 0.02% sodium azide,50% glycerol,pH7.3.
Concentration:	lot specific
Purification:	Affinity purification
Conjugation:	Unconjugated
Storage:	Store at -20°C. Avoid freeze / thaw cycles.
Stability:	Shelf life: one year from despatch.
Predicted Protein Size:	31kDa/35kDa
Gene Name:	deoxyribonuclease I like 3
Database Link:	<a href="#">Q13609</a>
Background:	This gene encodes a member of the deoxyribonuclease I family. The encoded protein hydrolyzes DNA, is not inhibited by actin, and mediates the breakdown of DNA during apoptosis. Mutations in this gene are a cause of systemic lupus erythematosus-16. Alternatively spliced transcript variants encoding multiple isoforms have been observed for this gene.
Synonyms:	DHP2; DNAS1L3; LS-DNase; LSD



[View online »](#)

## Product images:



Western blot analysis of extracts of mouse spleen, using DNASE1L3 antibody (TA375547) at 1:1000 dilution. | Secondary antibody: HRP Goat Anti-Rabbit IgG (H+L) at 1:10000 dilution. | Lysates/proteins: 25ug per lane. | Blocking buffer: 3% nonfat dry milk in TBST. | Detection: ECL Basic Kit . | Exposure time: 90s.