

Product datasheet for **TA375525**

DNAJB6 Rabbit Polyclonal Antibody

Product data:

Product Type:	Primary Antibodies
Applications:	ICC/IF, IHC, WB
Recommended Dilution:	WB,1:500 - 1:2000 IHC,1:50 - 1:200 IF,1:50 - 1:100
Reactivity:	Human, Mouse, Rat
Modifications:	Unmodified
Host:	Rabbit
Isotype:	IgG
Clonality:	Polyclonal
Immunogen:	Recombinant fusion protein containing a sequence corresponding to amino acids 177-326 of human DNAJB6 (NP_490647.1).
Formulation:	Buffer: PBS with 0.02% sodium azide,50% glycerol,pH7.3.
Concentration:	lot specific
Purification:	Affinity purification
Conjugation:	Unconjugated
Storage:	Store at -20°C. Avoid freeze / thaw cycles.
Stability:	Shelf life: one year from despatch.
Predicted Protein Size:	26kDa/30kDa/35kDa/36kDa
Gene Name:	DnaJ heat shock protein family (Hsp40) member B6
Database Link:	Entrez Gene 10049 Human O75190



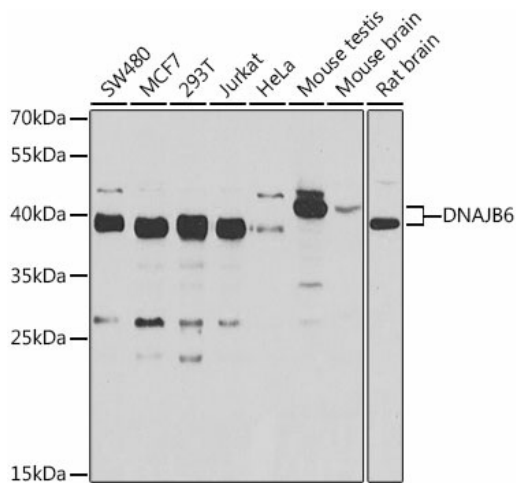
[View online »](#)

Background:

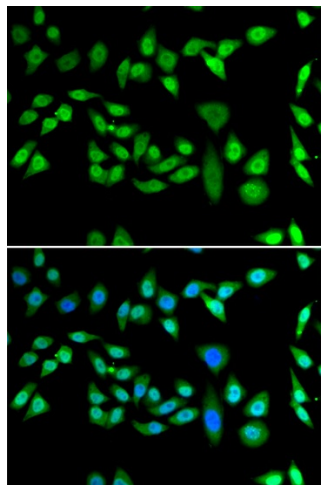
This gene encodes a member of the DNAJ protein family. DNAJ family members are characterized by a highly conserved amino acid stretch called the 'J-domain' and function as one of the two major classes of molecular chaperones involved in a wide range of cellular events, such as protein folding and oligomeric protein complex assembly. This family member may also play a role in polyglutamine aggregation in specific neurons. Alternative splicing of this gene results in multiple transcript variants; however, not all variants have been fully described.

Synonyms:

DJ4; DKFZp566D0824; Dnaj; FLJ42837; HHDJ1; HSJ-2; HSJ2; MGC1152; MGC117297; MRJ; MSJ-1; MSJ1

Product images:


Western blot analysis of extracts of various cell lines, using DNAJB6 antibody (TA375525) at 1:1000 dilution. | Secondary antibody: HRP Goat Anti-Rabbit IgG (H+L) at 1:10000 dilution. | Lysates/proteins: 25ug per lane. | Blocking buffer: 3% nonfat dry milk in TBST. | Detection: ECL Basic Kit . | Exposure time: 10s.



Immunofluorescence analysis of U2OS cells using DNAJB6 antibody (TA375525). Blue: DAPI for nuclear staining.