

Product datasheet for **TA375495S**

SAPAP3 (DLGAP3) Rabbit Polyclonal Antibody

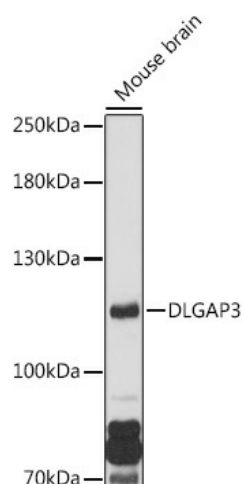
Product data:

Product Type:	Primary Antibodies
Applications:	ELISA, WB
Recommended Dilution:	WB, 1:500 - 1:1000 ELISA, Recommended starting concentration is 1 µg/mL. Please optimize the concentration based on your specific assay requirements.
Reactivity:	Human, Mouse
Modifications:	Unmodified
Host:	Rabbit
Isotype:	IgG
Clonality:	Polyclonal
Formulation:	Buffer: PBS with 0.02% sodium azide, 50% glycerol, pH 7.3.
Concentration:	lot specific
Purification:	Affinity purification
Conjugation:	Unconjugated
Storage:	Store at -20°C. Avoid freeze / thaw cycles.
Stability:	Shelf life: one year from despatch.
Predicted Protein Size:	106kDa
Gene Name:	DLG associated protein 3
Database Link:	Entrez Gene 58512 Human O95886
Background:	Predicted to enable PDZ domain binding activity; molecular adaptor activity; and scaffold protein binding activity. Predicted to be involved in protein-containing complex assembly and regulation of postsynaptic neurotransmitter receptor activity. Predicted to be located in synapse. Predicted to be part of postsynaptic density. Predicted to be active in several cellular components, including cholinergic synapse; glutamatergic synapse; and neuromuscular junction.
Synonyms:	DAP-3; DAP3; OTTHUMP00000004180; SAPAP3



[View online »](#)

Product images:



Western blot analysis of lysates from Mouse brain