

Product datasheet for **TA375489**

SAP97 (DLG1) Rabbit Polyclonal Antibody

Product data:

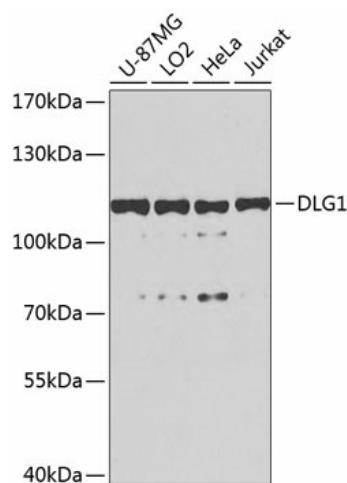
Product Type:	Primary Antibodies
Applications:	ICC/IF, WB
Recommended Dilution:	WB,1:500 - 1:2000 IF,1:50 - 1:200
Reactivity:	Human, Mouse, Rat
Modifications:	Unmodified
Host:	Rabbit
Isotype:	IgG
Clonality:	Polyclonal
Immunogen:	Recombinant fusion protein containing a sequence corresponding to amino acids 1-190 of human DLG1 (NP_004078.2).
Formulation:	Buffer: PBS with 0.02% sodium azide,50% glycerol,pH7.3.
Concentration:	lot specific
Purification:	Affinity purification
Conjugation:	Unconjugated
Storage:	Store at -20°C. Avoid freeze / thaw cycles.
Stability:	Shelf life: one year from despatch.
Predicted Protein Size:	87-103kDa
Gene Name:	discs large MAGUK scaffold protein 1
Database Link:	Entrez Gene 1739 Human Q12959
Background:	This gene encodes a multi-domain scaffolding protein that is required for normal development. This protein may have a role in septate junction formation, signal transduction, cell proliferation, synaptogenesis and lymphocyte activation. Several alternatively spliced transcript variants encoding different isoforms have been described for this gene, but the full-length nature of some of the variants is not known.



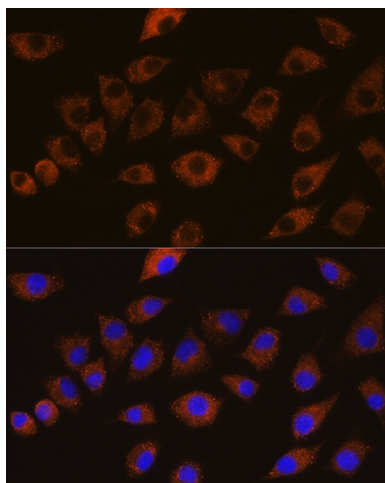
[View online »](#)

Synonyms: dj1061C18.1.1; DKFZp761P0818; DKFZp781B0426; DLGH1; hdlg; OTTHUMP00000165203; SAP-97; SAP97

Product images:



Western blot analysis of extracts of various cell lines, using DLG1 antibody (TA375489) at 1:1000 dilution. | Secondary antibody: HRP Goat Anti-Rabbit IgG (H+L) at 1:10000 dilution. | Lysates/proteins: 25ug per lane. | Blocking buffer: 3% nonfat dry milk in TBST. | Detection: ECL Basic Kit . | Exposure time: 90s.



Immunofluorescence analysis of L929 cells using DLG1 Rabbit pAb (TA375489) at dilution of 1:100 (40x lens). Blue: DAPI for nuclear staining.