

## Product datasheet for **TA375487**

### Lipoamide Dehydrogenase (DLD) Rabbit Polyclonal Antibody

#### Product data:

Product Type:	Primary Antibodies
Applications:	ICC/IF, IHC, WB
Recommended Dilution:	WB,1:500 - 1:2000 IHC,1:50 - 1:200 IF,1:50 - 1:200
Reactivity:	Human, Mouse
Modifications:	Unmodified
Host:	Rabbit
Isotype:	IgG
Clonality:	Polyclonal
Immunogen:	Recombinant fusion protein containing a sequence corresponding to amino acids 36-300 of human DLDH/DLDH/DLDH/DLD (NP_000099.2).
Formulation:	Buffer: PBS with 0.02% sodium azide,50% glycerol,pH7.3.
Concentration:	lot specific
Purification:	Affinity purification
Conjugation:	Unconjugated
Storage:	Store at -20°C. Avoid freeze / thaw cycles.
Stability:	Shelf life: one year from despatch.
Predicted Protein Size:	43kDa/49kDa/54kDa
Gene Name:	dihydrolipoamide dehydrogenase
Database Link:	<a href="#">Entrez Gene 1738 Human P09622</a>



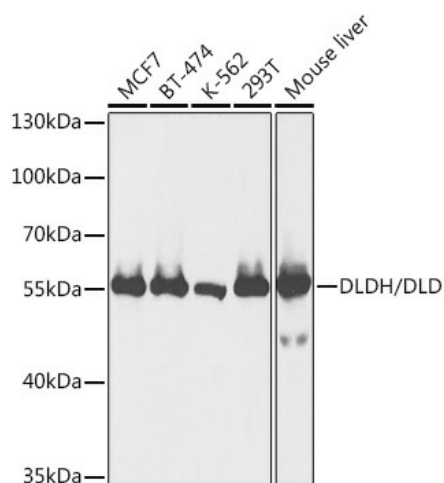
[View online »](#)

**Background:**

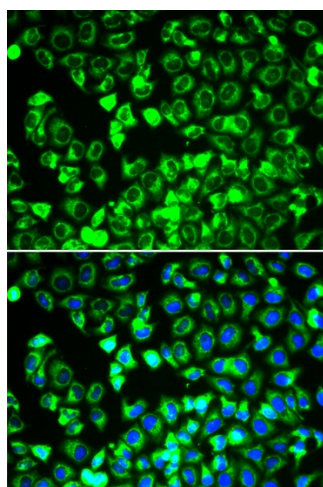
This gene encodes a member of the class-I pyridine nucleotide-disulfide oxidoreductase family. The encoded protein has been identified as a moonlighting protein based on its ability to perform mechanistically distinct functions. In homodimeric form, the encoded protein functions as a dehydrogenase and is found in several multi-enzyme complexes that regulate energy metabolism. However, as a monomer, this protein can function as a protease. Mutations in this gene have been identified in patients with E3-deficient maple syrup urine disease and lipoamide dehydrogenase deficiency. Alternative splicing results in multiple transcript variants.

**Synonyms:**

diaphorase; DLDH; E3; GCSL; LAD; OTTHUMP00000206749; PHE3

**Product images:**


Western blot analysis of extracts of various cell lines, using DLDH/DLDH/DLDH/DLD antibody (TA375487) at 1:1000 dilution. |Secondary antibody: HRP Goat Anti-Rabbit IgG (H+L) at 1:10000 dilution. |Lysates/proteins: 25ug per lane. |Blocking buffer: 3% nonfat dry milk in TBST. |Detection: ECL Basic Kit . |Exposure time: 5s.



Immunofluorescence analysis of HeLa cells using DLDH/DLDH/DLDH/DLD antibody (TA375487). Blue: DAPI for nuclear staining.