

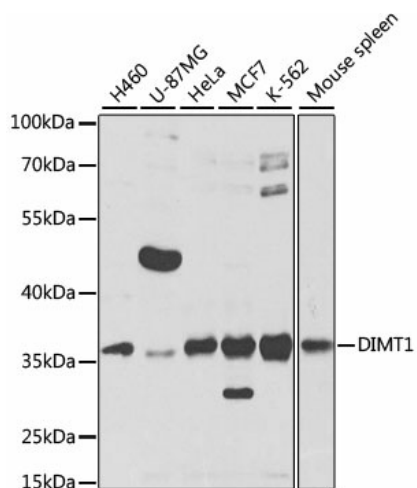
## Product datasheet for **TA375471S**

### **DIMT1L (DIMT1) Rabbit Polyclonal Antibody**

#### **Product data:**

Product Type:	Primary Antibodies
Applications:	ELISA, WB
Recommended Dilution:	WB, 1:500 - 1:2000 ELISA, Recommended starting concentration is 1 µg/mL. Please optimize the concentration based on your specific assay requirements.
Reactivity:	Human, Mouse, Rat
Modifications:	Unmodified
Host:	Rabbit
Isotype:	IgG
Clonality:	Polyclonal
Formulation:	Buffer: PBS with 0.02% sodium azide, 50% glycerol, pH 7.3.
Concentration:	lot specific
Purification:	Affinity purification
Conjugation:	Unconjugated
Storage:	Store at -20°C. Avoid freeze / thaw cycles.
Stability:	Shelf life: one year from despatch.
Predicted Protein Size:	35kDa
Gene Name:	DIM1 dimethyladenosine transferase 1 homolog
Database Link:	<a href="#">Entrez Gene 27292 Human Q9UNQ2</a>
Background:	The protein encoded by this gene is a methyltransferase that is responsible for dimethylation of adjacent adenosines near the 18S rRNA decoding site. The encoded protein is essential for ribosome biogenesis, although its catalytic activity is not involved in the process. The yeast ortholog of this protein functions in the cytoplasm while this protein functions in the nucleus.
Synonyms:	1500031M22Rik; AV111347; Dimt1l; RGD1311752


[View online »](#)

**Product images:**


Western blot analysis of various lysates using DIMT1 Rabbit pAb (TA375471S) at 1:1000 dilution. Secondary antibody: HRP-conjugated Goat anti-Rabbit IgG (H+L) (AS014) at 1:10000 dilution. Lysates/proteins: 25µg per lane. Blocking buffer: 3% nonfat dry milk in TBST. Detection: ECL Basic Kit (RM00020). Exposure time: 10s.