

Product datasheet for **TA375425S**

DET1 Rabbit Polyclonal Antibody

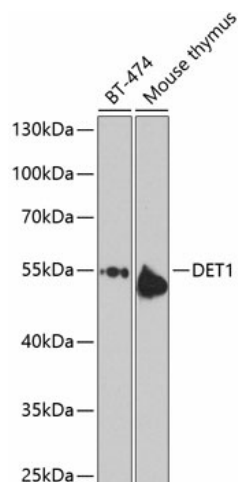
Product data:

Product Type:	Primary Antibodies
Applications:	ELISA, WB
Recommended Dilution:	WB, 1:500 - 1:2000 ELISA, Recommended starting concentration is 1 µg/mL. Please optimize the concentration based on your specific assay requirements.
Reactivity:	Human, Mouse, Rat
Modifications:	Unmodified
Host:	Rabbit
Isotype:	IgG
Clonality:	Polyclonal
Formulation:	Buffer: PBS with 0.02% sodium azide, 50% glycerol, pH 7.3.
Concentration:	lot specific
Purification:	Affinity purification
Conjugation:	Unconjugated
Storage:	Store at -20°C. Avoid freeze / thaw cycles.
Stability:	Shelf life: one year from despatch.
Predicted Protein Size:	64kDa
Gene Name:	de-etiolated homolog 1 (Arabidopsis)
Database Link:	Entrez Gene 55070 Human Q7L5Y6
Background:	Enables ubiquitin ligase-substrate adaptor activity and ubiquitin protein ligase binding activity. Involved in positive regulation of proteasomal ubiquitin-dependent protein catabolic process; protein ubiquitination; and protein-containing complex assembly. Part of Cul4A-RING E3 ubiquitin ligase complex.
Synonyms:	FLJ10103; MGC126156; MGC126157



[View online »](#)

Product images:



Western blot analysis of various lysates using DET1 Rabbit pAb ([TA375425]) at 1:1000 dilution. Secondary antibody: HRP-conjugated Goat anti-Rabbit IgG (H+L) (AS014) at 1:10000 dilution. Lysates/proteins: 25µg per lane. Blocking buffer: 3% nonfat dry milk in TBST. Detection: ECL Enhanced Kit (RM00021). Exposure time: 10s.