

Product datasheet for **TA375409S**

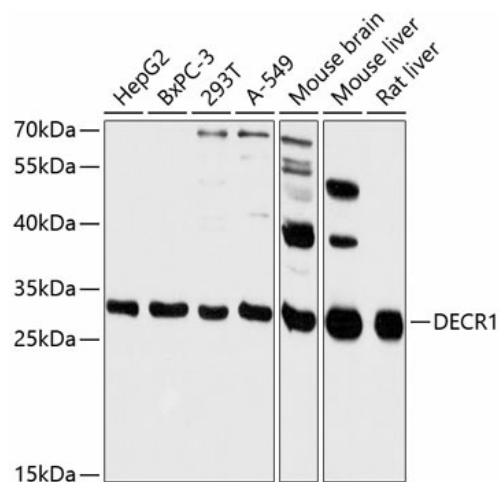
DECR1 Rabbit Polyclonal Antibody

Product data:

Product Type:	Primary Antibodies
Applications:	ELISA, WB
Recommended Dilution:	WB, 1:500 - 1:2000 ELISA, Recommended starting concentration is 1 µg/mL. Please optimize the concentration based on your specific assay requirements.
Reactivity:	Human, Mouse, Rat
Modifications:	Unmodified
Host:	Rabbit
Isotype:	IgG
Clonality:	Polyclonal
Formulation:	PBS with 0.05% proclin300, 50% glycerol, pH7.3.
Concentration:	lot specific
Purification:	Affinity purification
Conjugation:	Unconjugated
Storage:	Store at -20°C. Avoid freeze / thaw cycles.
Stability:	Shelf life: one year from despatch.
Predicted Protein Size:	36kDa
Gene Name:	2,4-dienoyl-CoA reductase 1, mitochondrial
Database Link:	Entrez Gene 1666 Human Q16698
Background:	Enables 2,4-dienoyl-CoA reductase (NADPH) activity; NADPH binding activity; and identical protein binding activity. Involved in fatty acid beta-oxidation. Located in cytosol; mitochondrion; and nucleoplasm. Part of catalytic complex.
Synonyms:	DECR; NADPH; SDR18C1



[View online »](#)

Product images:


Western blot analysis of various lysates using DECR1 Rabbit pAb (TA375409S) at 1:2000 dilution.
 Secondary antibody: HRP-conjugated Goat anti-Rabbit IgG (H+L) (AS014) at 1:10000 dilution.
 Lysates/proteins: 25 µg per lane.
 Blocking buffer: 3% nonfat dry milk in TBST.
 Detection: ECL Basic Kit (RM00020).
 Negative control (NC): 293T.
 Exposure time: 30s.