

Product datasheet for **TA375357S**

TRP2 (DCT) Rabbit Polyclonal Antibody

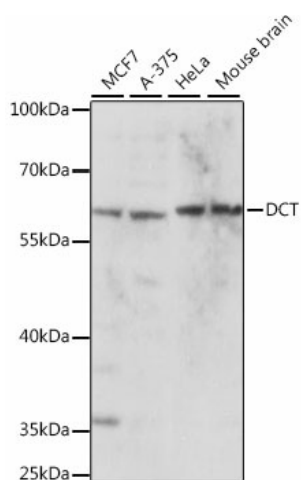
Product data:

Product Type:	Primary Antibodies
Applications:	ELISA, WB
Recommended Dilution:	WB, 1:500 - 1:2000 ELISA, Recommended starting concentration is 1 µg/mL. Please optimize the concentration based on your specific assay requirements.
Reactivity:	Human, Mouse
Modifications:	Unmodified
Host:	Rabbit
Isotype:	IgG
Clonality:	Polyclonal
Formulation:	Buffer: PBS with 0.02% sodium azide, 50% glycerol, pH 7.3.
Concentration:	lot specific
Purification:	Affinity purification
Conjugation:	Unconjugated
Storage:	Store at -20°C. Avoid freeze / thaw cycles.
Stability:	Shelf life: one year from despatch.
Predicted Protein Size:	59kDa
Gene Name:	dopachrome tautomerase
Database Link:	Entrez Gene 1638 Human P40126
Background:	Predicted to enable dopachrome isomerase activity. Involved in response to blue light. Located in intracellular membrane-bounded organelle and plasma membrane. Implicated in oculocutaneous albinism.
Synonyms:	DT; TRP-2; TRP2; TYRP2



[View online »](#)

Product images:



Western blot analysis of various lysates using DCT Rabbit pAb (TA375357) at 1:1000 dilution.
 Secondary antibody: HRP-conjugated Goat anti-Rabbit IgG (H+L) (AS014) at 1:10000 dilution.
 Lysates/proteins: 25µg per lane.
 Blocking buffer: 3% nonfat dry milk in TBST.
 Detection: ECL Basic Kit (RM00020).
 Exposure time: 10s.