

## Product datasheet for **TA375346**

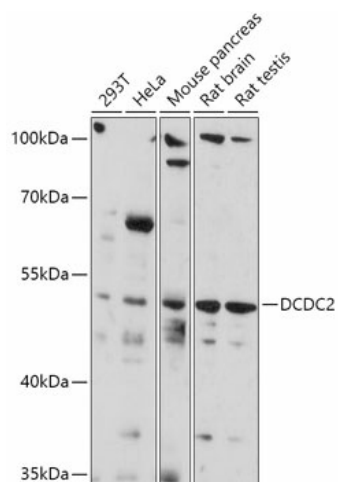
### DCDC2 Rabbit Polyclonal Antibody

#### Product data:

Product Type:	Primary Antibodies
Applications:	WB
Recommended Dilution:	WB,1:500 - 1:2000
Reactivity:	Human, Mouse, Rat
Modifications:	Unmodified
Host:	Rabbit
Isotype:	IgG
Clonality:	Polyclonal
Immunogen:	Recombinant fusion protein containing a sequence corresponding to amino acids 1-250 of human DCDC2 (NP_001182539).
Formulation:	Buffer: PBS with 0.02% sodium azide,50% glycerol,pH7.3.
Concentration:	lot specific
Purification:	Affinity purification
Conjugation:	Unconjugated
Storage:	Store at -20°C. Avoid freeze / thaw cycles.
Stability:	Shelf life: one year from despatch.
Gene Name:	doublecortin domain containing 2
Database Link:	<a href="#">Entrez Gene 51473 Human Q9UHG0</a>
Background:	This gene encodes a doublecortin domain-containing family member. The doublecortin domain has been demonstrated to bind tubulin and enhance microtubule polymerization. This family member is thought to function in neuronal migration where it may affect the signaling of primary cilia. Mutations in this gene have been associated with reading disability (RD) type 2, also referred to as developmental dyslexia. Alternatively spliced transcript variants encoding the same protein have been found for this gene. [provided by RefSeq, Jan 2013]
Synonyms:	DCDC2A; KIAA1154; RU2; RU2S



[View online »](#)

**Product images:**

Western blot analysis of extracts of various cell lines, using DCDC2 antibody (TA375346) at 1:1000 dilution. | Secondary antibody: HRP Goat Anti-Rabbit IgG (H+L) at 1:10000 dilution. | Lysates/proteins: 25ug per lane. | Blocking buffer: 3% nonfat dry milk in TBST. | Detection: ECL Basic Kit . | Exposure time: 3min.