

Product datasheet for **TA375340**

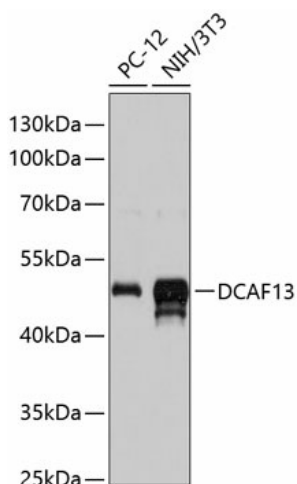
DCAF13 Rabbit Polyclonal Antibody

Product data:

| | |
|-------------------------|------------------------------------------------------------------------------------------------------------------------------------------------------------------------------------------------------------------------------------------------------------------------------------------------------------|
| Product Type: | Primary Antibodies |
| Applications: | ELISA, WB |
| Recommended Dilution: | WB, 1:500 - 1:2000 ELISA, Recommended starting concentration is 1 µg/mL. Please optimize the concentration based on your specific assay requirements. |
| Reactivity: | Human, Mouse, Rat |
| Modifications: | Unmodified |
| Host: | Rabbit |
| Isotype: | IgG |
| Clonality: | Polyclonal |
| Formulation: | Buffer: PBS with 0.01% thimerosal, 50% glycerol, pH7.3. |
| Concentration: | lot specific |
| Purification: | Affinity purification |
| Conjugation: | Unconjugated |
| Storage: | Store at -20°C. Avoid freeze / thaw cycles. |
| Stability: | Shelf life: one year from despatch. |
| Predicted Protein Size: | 51kDa |
| Gene Name: | DDB1 and CUL4 associated factor 13 |
| Database Link: | Entrez Gene 25879 Human Q9NV06 |
| Background: | Enables estrogen receptor binding activity. Predicted to be involved in maturation of SSU-rRNA from tricistronic rRNA transcript (SSU-rRNA, 5.8S rRNA, LSU-rRNA). Located in several cellular components, including centrosome; cytosol; and nuclear lumen. Part of Cul4-RING E3 ubiquitin ligase complex. |
| Synonyms: | GM83; HSPC064; WDSOF1 |

[View online »](#)

Product images:



Western blot analysis of various lysates using DCAF13 Rabbit pAb (TA375340) at 1:3000 dilution. Secondary antibody: HRP-conjugated Goat anti-Rabbit IgG (H+L) at 1:10000 dilution. Lysates/proteins: 25µg per lane. Blocking buffer: 3% nonfat dry milk in TBST. Detection: ECL Basic Kit. Exposure time: 15s.