

## Product datasheet for **TA375337**

### DBT Rabbit Polyclonal Antibody

#### Product data:

|                         |                                                          |
|-------------------------|----------------------------------------------------------|
| Product Type:           | Primary Antibodies                                       |
| Applications:           | ICC/IF, IHC, WB                                          |
| Recommended Dilution:   | WB,1:500 - 1:2000<br>IHC,1:50 - 1:200<br>IF,1:50 - 1:200 |
| Reactivity:             | Human, Mouse, Rat                                        |
| Modifications:          | Unmodified                                               |
| Host:                   | Rabbit                                                   |
| Isotype:                | IgG                                                      |
| Clonality:              | Polyclonal                                               |
| Immunogen:              | Recombinant protein of human DBT.                        |
| Formulation:            | Buffer: PBS with 0.02% sodium azide,50% glycerol,pH7.3.  |
| Concentration:          | lot specific                                             |
| Purification:           | Affinity purification                                    |
| Conjugation:            | Unconjugated                                             |
| Storage:                | Store at -20°C. Avoid freeze / thaw cycles.              |
| Stability:              | Shelf life: one year from despatch.                      |
| Predicted Protein Size: | 53kDa                                                    |
| Gene Name:              | dihydrolipoamide branched chain transacylase E2          |
| Database Link:          | <a href="#">Entrez Gene 1629 Human P11182</a>            |

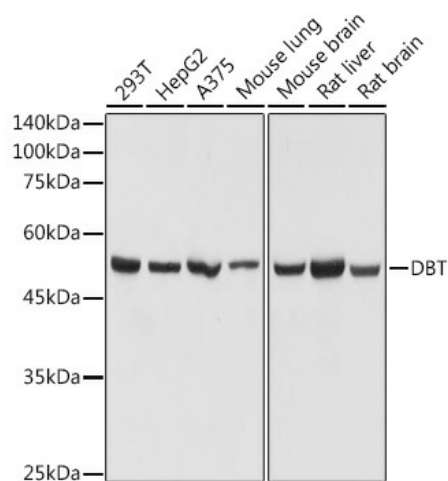
**Background:** The branched-chain alpha-keto acid dehydrogenase complex (BCKD) is an inner-mitochondrial enzyme complex involved in the breakdown of the branched-chain amino acids isoleucine, leucine, and valine. The BCKD complex is thought to be composed of a core of 24 transacylase (E2) subunits, and associated decarboxylase (E1), dehydrogenase (E3), and regulatory subunits. This gene encodes the transacylase (E2) subunit. Mutations in this gene result in maple syrup urine disease, type 2. Alternatively spliced transcript variants have been described, but their biological validity has not been determined.



[View online »](#)

Synonyms: BCATE2; E2; E2B; MGC9061

### Product images:



Western blot analysis of extracts of various cell lines, using DBT antibody (TA375337) at 1:1000 dilution. | Secondary antibody: HRP Goat Anti-Rabbit IgG (H+L) at 1:10000 dilution. | Lysates/proteins: 25ug per lane. | Blocking buffer: 3% nonfat dry milk in TBST. | Detection: ECL Basic Kit . | Exposure time: 1s.