

Product datasheet for **TA375322S**

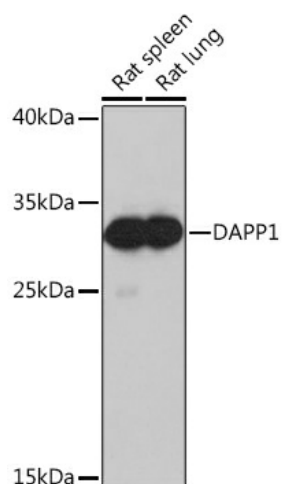
DAPP1 Rabbit Polyclonal Antibody

Product data:

Product Type:	Primary Antibodies
Applications:	ELISA, ICC/IF, WB
Recommended Dilution:	WB, 1:500 - 1:2000 IF/ICC, 1:50 - 1:200 ELISA, Recommended starting concentration is 1 µg/mL. Please optimize the concentration based on your specific assay requirements.
Reactivity:	Human, Mouse, Rat
Modifications:	Unmodified
Host:	Rabbit
Isotype:	IgG
Clonality:	Polyclonal
Formulation:	Buffer: PBS with 0.02% sodium azide, 50% glycerol, pH 7.3.
Concentration:	lot specific
Purification:	Affinity purification
Conjugation:	Unconjugated
Storage:	Store at -20°C. Avoid freeze / thaw cycles.
Stability:	Shelf life: one year from despatch.
Predicted Protein Size:	32kDa
Gene Name:	dual adaptor of phosphotyrosine and 3-phosphoinositides 1
Database Link:	Entrez Gene 27071 Human Q9UN19
Background:	Enables phosphatidylinositol-3,4,5-trisphosphate binding activity and phosphatidylinositol-3,4-bisphosphate binding activity. Predicted to be involved in signal transduction. Located in plasma membrane.
Synonyms:	BAM32; DKFZp667E0716; hDAPP1



[View online »](#)

Product images:

Western blot analysis of various lysates using DAPP1 Rabbit pAb ([TA375322]) at 1:1000 dilution.

Secondary antibody: HRP-conjugated Goat anti-Rabbit IgG (H+L) (AS014) at 1:10000 dilution.

Lysates/proteins: 25µg per lane.

Blocking buffer: 3% nonfat dry milk in TBST.

Detection: ECL Basic Kit (RM00020).

Exposure time: 10s.