

Product datasheet for **TA375313**

DAB1 Rabbit Polyclonal Antibody

Product data:

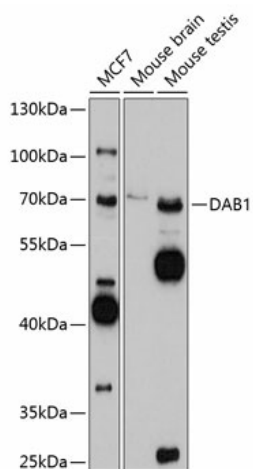
| | |
|-------------------------|---|
| Product Type: | Primary Antibodies |
| Applications: | ICC/IF, WB |
| Recommended Dilution: | WB,1:500 - 1:2000 IF,1:50 - 1:200 |
| Reactivity: | Human, Mouse, Rat |
| Modifications: | Unmodified |
| Host: | Rabbit |
| Isotype: | IgG |
| Clonality: | Polyclonal |
| Immunogen: | Recombinant fusion protein containing a sequence corresponding to amino acids 1-185 of human DAB1 (NP_066566.3). |
| Formulation: | Buffer: PBS with 0.02% sodium azide,50% glycerol,pH7.3. |
| Concentration: | lot specific |
| Purification: | Affinity purification |
| Conjugation: | Unconjugated |
| Storage: | Store at -20°C. Avoid freeze / thaw cycles. |
| Stability: | Shelf life: one year from despatch. |
| Predicted Protein Size: | 24kDa/49kDa/57kDa/59kDa/63kDa |
| Gene Name: | DAB1, reelin adaptor protein |
| Database Link: | Entrez Gene 1600 Human O75553 |
| Background: | The laminar organization of multiple neuronal types in the cerebral cortex is required for normal cognitive function. In mice, the disabled-1 gene plays a central role in brain development, directing the migration of cortical neurons past previously formed neurons to reach their proper layer. This gene is similar to disabled-1, and the protein encoded by this gene is thought to be a signal transducer that interacts with protein kinase pathways to regulate neuronal positioning in the developing brain. |



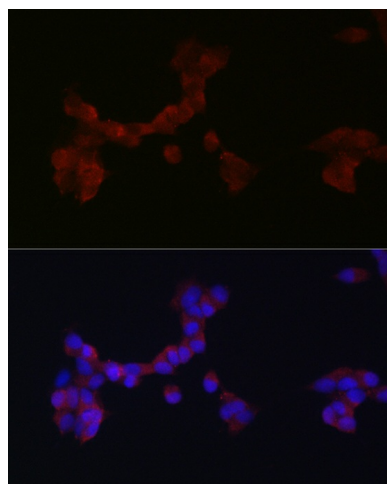
[View online »](#)

Synonyms: OTTHUMP00000010045; OTTHUMP00000011753

Product images:



Western blot analysis of extracts of various cell lines, using DAB1 antibody (TA375313) at 1:1000 dilution. | Secondary antibody: HRP Goat Anti-Rabbit IgG (H+L) at 1:10000 dilution. | Lysates/proteins: 25ug per lane. | Blocking buffer: 3% nonfat dry milk in TBST. | Detection: ECL Basic Kit . | Exposure time: 90s.



Immunofluorescence analysis of SH-SY5Y cells using DAB1 Rabbit pAb (TA375313) at dilution of 1:250 (40x lens). Blue: DAPI for nuclear staining.