

Product datasheet for TA375309S

PSCD4 (CYTH4) Rabbit Polyclonal Antibody

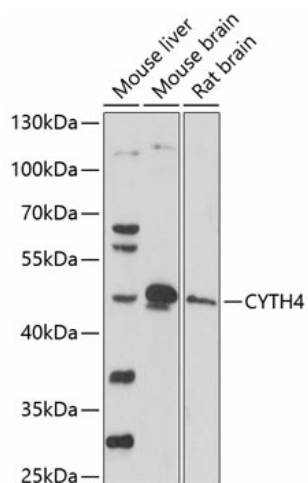
Product data:

Product Type:	Primary Antibodies
Applications:	ELISA, WB
Recommended Dilution:	WB, 1:500 - 1:2000 ELISA, Recommended starting concentration is 1 µg/mL. Please optimize the concentration based on your specific assay requirements.
Reactivity:	Mouse, Rat
Modifications:	Unmodified
Host:	Rabbit
Isotype:	IgG
Clonality:	Polyclonal
Formulation:	Buffer: PBS with 0.02% sodium azide, 50% glycerol, pH 7.3.
Concentration:	lot specific
Purification:	Affinity purification
Conjugation:	Unconjugated
Storage:	Store at -20°C. Avoid freeze / thaw cycles.
Stability:	Shelf life: one year from despatch.
Predicted Protein Size:	46kDa
Gene Name:	cytohesin 4
Database Link:	Q9UIA0
Background:	This gene encodes a member of the PSCD family of proteins, which have an N-terminal coiled-coil motif, a central Sec7 domain, and a C-terminal pleckstrin homology (PH) domain. The coiled-coil motif is involved in homodimerization, the Sec7 domain contains guanine-nucleotide exchange protein (GEP) activity, and the PH domain interacts with phospholipids and is responsible for association of PSCDs with membranes. Members of this family function as GEPs for ADP-ribosylation factors (ARFs), which are guanine nucleotide-binding proteins involved in vesicular trafficking pathways. This protein exhibits GEP activity in vitro with ARF1 and ARF5, but is inactive with ARF6. Alternatively spliced transcript variants have been found for this gene.


[View online »](#)

Synonyms: CYT4; cytohesin-4; DJ63G5.1; PSCD4

Product images:



Western blot analysis of various lysates using CYTH4 Rabbit pAb (TA375309) at 1:1000 dilution.

Secondary antibody: HRP-conjugated Goat anti-Rabbit IgG (H+L) (AS014) at 1:10000 dilution.

Lysates/proteins: 25µg per lane.

Blocking buffer: 3% nonfat dry milk in TBST.

Detection: ECL Basic Kit (RM00020).

Exposure time: 90s.