

## Product datasheet for **TA375265S**

### CYFIP1 Rabbit Polyclonal Antibody

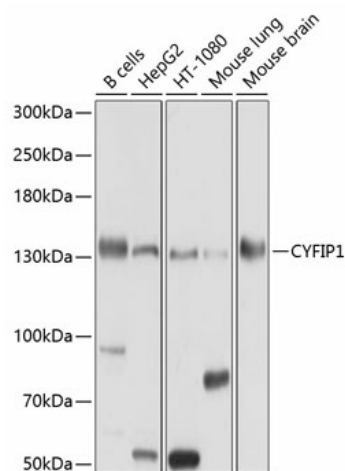
#### Product data:

Product Type:	Primary Antibodies
Applications:	ELISA, IP, WB
Recommended Dilution:	WB, 1:1000 - 1:2000 IP, 0.5µg-4µg antibody for 200µg-400µg extracts of whole cells ELISA, Recommended starting concentration is 1 µg/mL. Please optimize the concentration based on your specific assay requirements.
Reactivity:	Human, Mouse
Modifications:	Unmodified
Host:	Rabbit
Isotype:	IgG
Clonality:	Polyclonal
Formulation:	Buffer: PBS with 0.02% sodium azide, 50% glycerol, pH 7.3.
Concentration:	lot specific
Purification:	Affinity purification
Conjugation:	Unconjugated
Storage:	Store at -20°C. Avoid freeze / thaw cycles.
Stability:	Shelf life: one year from despatch.
Predicted Protein Size:	145kDa
Gene Name:	cytoplasmic FMR1 interacting protein 1
Database Link:	<a href="#">Entrez Gene 23191 Human Q7L576</a>
Background:	This gene encodes a protein that regulates cytoskeletal dynamics and protein translation. The encoded protein is a component of the WAVE regulatory complex (WRC), which promotes actin polymerization. This protein also interacts with the synaptic functional regulator FMR1 protein and translation initiation factor 4E to inhibit protein translation. A large chromosomal deletion including this gene is associated with increased risk of schizophrenia and epilepsy in human patients. Reduced expression of this gene has been observed in various human cancers and the encoded protein may inhibit tumor invasion.


[View online »](#)

**Synonyms:** FLJ45151; KIAA0068; P140SRA-1; SHYC; Sra-1; SRA1

## Product images:



Western blot analysis of various lysates using CYFIP1 Rabbit pAb ([TA375265]) at 1:1000 dilution.

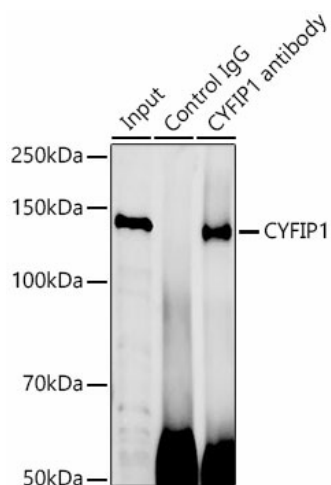
Secondary antibody: HRP-conjugated Goat anti-Rabbit IgG (H+L) (AS014) at 1:10000 dilution.

Lysates/proteins: 25µg per lane.

Blocking buffer: 3% nonfat dry milk in TBST.

Detection: ECL Basic Kit (RM00020).

Exposure time: 10s.



Immunoprecipitation analysis of 300 µg extracts of BT-474 cells using 3 µg CYFIP1 antibody ([TA375265]). Western blot was performed from the immunoprecipitate using CYFIP1 antibody ([TA375265]) at a dilution of 1:500.