

Product datasheet for **TA375258S**

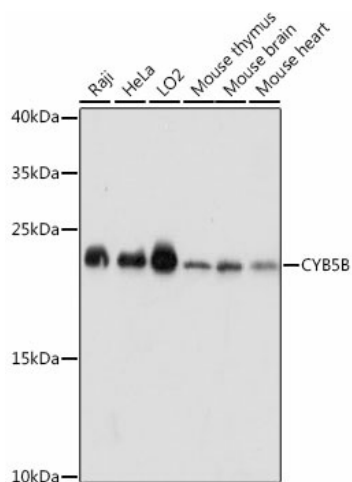
Cytochrome b5 Outer Mitochondrial Membrane (CYB5B) Rabbit Polyclonal Antibody

Product data:

Product Type:	Primary Antibodies
Applications:	ELISA, WB
Recommended Dilution:	WB, 1:500 - 1:2000 ELISA, Recommended starting concentration is 1 µg/mL. Please optimize the concentration based on your specific assay requirements.
Reactivity:	Human, Mouse
Modifications:	Unmodified
Host:	Rabbit
Isotype:	IgG
Clonality:	Polyclonal
Formulation:	Buffer: PBS with 0.02% sodium azide, 50% glycerol, pH 7.3.
Concentration:	lot specific
Purification:	Affinity purification
Conjugation:	Unconjugated
Storage:	Store at -20°C. Avoid freeze / thaw cycles.
Stability:	Shelf life: one year from despatch.
Predicted Protein Size:	17kDa
Gene Name:	cytochrome b5 type B
Database Link:	Entrez Gene 80777 Human O43169
Background:	Enables heme binding activity. Contributes to nitrite reductase (NO-forming) activity. Involved in nitric oxide biosynthetic process. Located in membrane. Part of nitric-oxide synthase complex.
Synonyms:	CYB5-M; CYB5M; CYPB5M; DKFZp686M0619; OMB5



[View online »](#)

Product images:


Western blot analysis of various lysates using CYB5B Rabbit pAb (TA375258) at 1:1000 dilution.

Secondary antibody: HRP-conjugated Goat anti-Rabbit IgG (H+L) (AS014) at 1:10000 dilution.

Lysates/proteins: 25µg per lane.

Blocking buffer: 3% nonfat dry milk in TBST.

Detection: ECL Basic Kit (RM00020).

Exposure time: 1s.