

Product datasheet for **TA375256S**

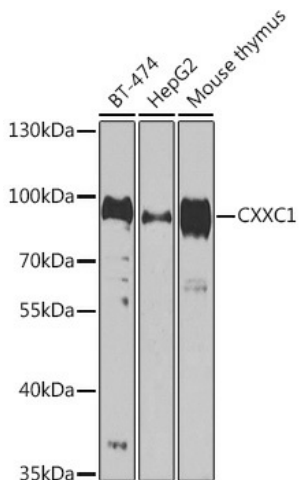
CGBP (CXXC1) Rabbit Polyclonal Antibody

Product data:

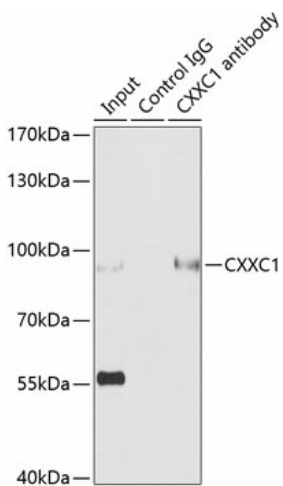
Product Type:	Primary Antibodies
Applications:	IP, WB
Recommended Dilution:	WB, 1:500 - 1:2000 IP, 1:20 - 1:50
Reactivity:	Human, Mouse
Modifications:	Unmodified
Host:	Rabbit
Isotype:	IgG
Clonality:	Polyclonal
Immunogen:	Recombinant fusion protein containing a sequence corresponding to amino acids 1-210 of human CXXC1 (NP_001095124.1).
Formulation:	Buffer: PBS with 0.02% sodium azide, 50% glycerol, pH 7.3.
Concentration:	lot specific
Purification:	Affinity purification
Conjugation:	Unconjugated
Storage:	Store at -20°C. Avoid freeze / thaw cycles.
Stability:	Shelf life: one year from despatch.
Predicted Protein Size:	75kDa/76kDa
Gene Name:	CXXC finger protein 1
Database Link:	Entrez Gene 30827 Human Q9P0U4
Background:	This gene encodes a protein that functions as a transcriptional activator that binds specifically to non-methylated CpG motifs through its CXXC domain. The protein is a component of the SETD1 complex, regulates gene expression and is essential for vertebrate development.
Synonyms:	2410002116Rik; 5830420C16Rik; CFP1; CGBP; hCGBP; HsT2645; PCCX1; PHF18; SPP1; ZCGPC1



[View online »](#)

Product images:


Western blot analysis of extracts of various cell lines, using CXXC1 antibody ([TA375256]) at 1:1000 dilution. |Secondary antibody: HRP Goat Anti-Rabbit IgG (H+L) at 1:10000 dilution. |Lysates/proteins: 25ug per lane. |Blocking buffer: 3% nonfat dry milk in TBST. |Detection: ECL Enhanced Kit . |Exposure time: 90s.



Immunoprecipitation analysis of 200ug extracts of HepG2 cells using 3ug CXXC1 antibody ([TA375256]). Western blot was performed from the immunoprecipitate using CXXC1 antibody ([TA375256]) at a dilution of 1:500.