

Product datasheet for **TA375250**

CXCR2 Rabbit Polyclonal Antibody

Product data:

Product Type:	Primary Antibodies
Applications:	ICC/IF, IHC, WB
Recommended Dilution:	WB,1:500 - 1:2000 IHC,1:50 - 1:200 IF,1:50 - 1:200
Reactivity:	Human, Mouse, Rat
Modifications:	Unmodified
Host:	Rabbit
Isotype:	IgG
Clonality:	Polyclonal
Immunogen:	Recombinant protein of human CXCR2.
Formulation:	Buffer: PBS with 0.02% sodium azide,50% glycerol,pH7.3.
Concentration:	lot specific
Purification:	Affinity purification
Conjugation:	Unconjugated
Storage:	Store at -20°C. Avoid freeze / thaw cycles.
Stability:	Shelf life: one year from despatch.
Predicted Protein Size:	40kDa
Gene Name:	C-X-C motif chemokine receptor 2
Database Link:	Entrez Gene 3579 Human P25025



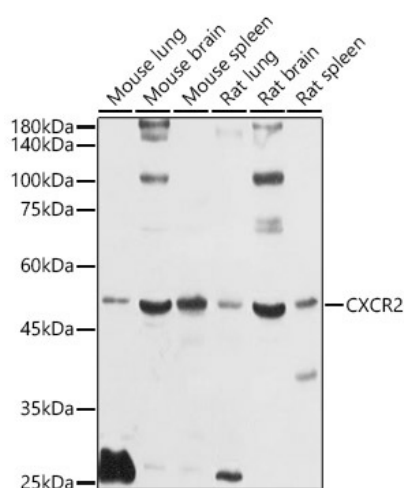
[View online »](#)

Background:

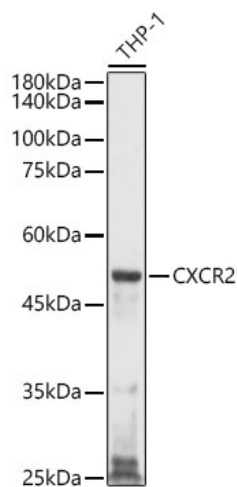
The protein encoded by this gene is a member of the G-protein-coupled receptor family. This protein is a receptor for interleukin 8 (IL8). It binds to IL8 with high affinity, and transduces the signal through a G-protein activated second messenger system. This receptor also binds to chemokine (C-X-C motif) ligand 1 (CXCL1/MGSA), a protein with melanoma growth stimulating activity, and has been shown to be a major component required for serum-dependent melanoma cell growth. This receptor mediates neutrophil migration to sites of inflammation. The angiogenic effects of IL8 in intestinal microvascular endothelial cells are found to be mediated by this receptor. Knockout studies in mice suggested that this receptor controls the positioning of oligodendrocyte precursors in developing spinal cord by arresting their migration. This gene, IL8RA, a gene encoding another high affinity IL8 receptor, as well as IL8RBP, a pseudogene of IL8RB, form a gene cluster in a region mapped to chromosome 2q33-q36. Alternatively spliced variants, encoding the same protein, have been identified.

Synonyms:

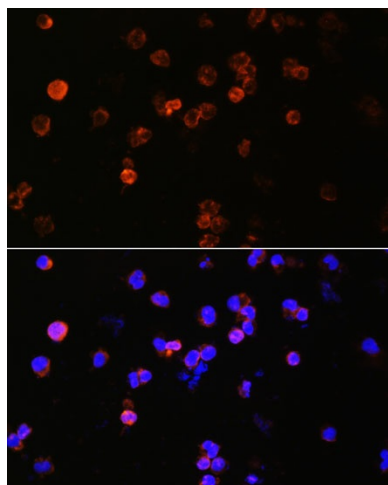
CD128; CDw128; Cmkar2; Gpcr16; IL-8rb; IL-8Rh; IL8RA; Il8rb; mLIL-8RH

Product images:

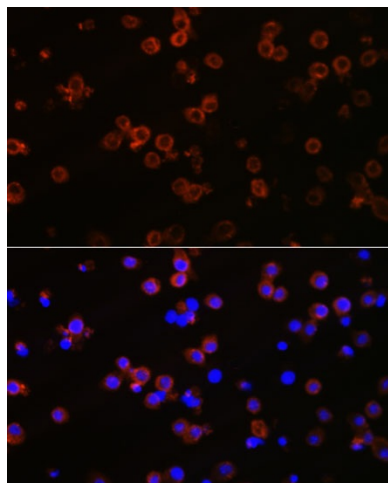
Western blot analysis of extracts of various cell lines, using CXCR2 antibody (TA375250) at 1:1000 dilution. | Secondary antibody: HRP Goat Anti-Rabbit IgG (H+L) at 1:10000 dilution. | Lysates/proteins: 25ug per lane. | Blocking buffer: 3% nonfat dry milk in TBST. | Detection: ECL Basic Kit. | Exposure time: 10s.



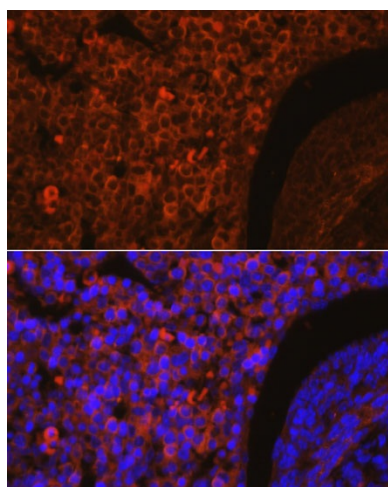
Western blot analysis of extracts of THP-1 cells, using CXCR2 antibody (TA375250) at 1:1000 dilution. | Secondary antibody: HRP Goat Anti-Rabbit IgG (H+L) at 1:10000 dilution. | Lysates/proteins: 25ug per lane. | Blocking buffer: 3% nonfat dry milk in TBST. | Detection: ECL Basic Kit . | Exposure time: 30s.



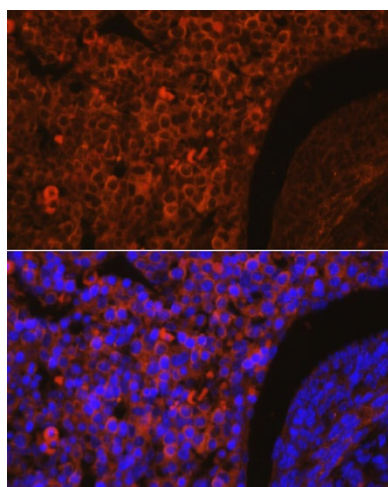
Immunofluorescence analysis of Jurkat cells using CXCR2 antibody (TA375250) at dilution of 1:100. Blue: DAPI for nuclear staining.



Immunofluorescence analysis of Raw264.7 cells using CXCR2 antibody (TA375250) at dilution of 1:100. Blue: DAPI for nuclear staining.



Immunofluorescence analysis of mouse embryos using CXCR2 antibody (TA375250) at dilution of 1:100. Blue: DAPI for nuclear staining.



Immunofluorescence analysis of mouse embryos using CXCR2 antibody (TA375250) at dilution of 1:100. Blue: DAPI for nuclear staining.