

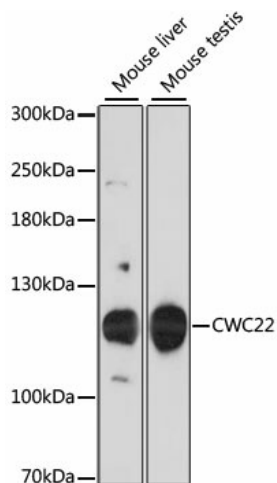
Product datasheet for **TA375236**

CWC22 Rabbit Polyclonal Antibody

Product data:

Product Type:	Primary Antibodies
Applications:	ELISA, WB
Recommended Dilution:	WB, 1:1000 – 1:2000 ELISA, Recommended starting concentration is 1 µg/mL. Please optimize the concentration based on your specific assay requirements.
Reactivity:	Mouse
Modifications:	Unmodified
Host:	Rabbit
Isotype:	IgG
Clonality:	Polyclonal
Formulation:	Buffer: PBS with 0.01% thimerosal, 50% glycerol, pH 7.3.
Concentration:	lot specific
Purification:	Affinity purification
Conjugation:	Unconjugated
Storage:	Store at -20°C. Avoid freeze / thaw cycles.
Stability:	Shelf life: one year from despatch.
Predicted Protein Size:	105kDa
Gene Name:	CWC22 homolog, spliceosome-associated protein
Database Link:	Q9HCG8
Background:	Enables RNA binding activity. Involved in mRNA splicing, via spliceosome. Located in cytosol and nuclear speck. Part of U2-type catalytic step 1 spliceosome; U2-type catalytic step 2 spliceosome; and U2-type precatalytic spliceosome.
Synonyms:	EIF4GL; fSAPb; KIAA1604; NCM



Product images:

Western blot analysis of various lysates using CWC22 Rabbit pAb (TA375236) at 1:3000 dilution.

Secondary antibody: HRP-conjugated Goat anti-Rabbit IgG (H+L) at 1:10000 dilution.

Lysates/proteins: 25µg per lane.

Blocking buffer: 3% nonfat dry milk in TBST.

Detection: ECL Basic Kit .

Exposure time: 30s.