

## Product datasheet for **TA375235S**

### CUX1 Rabbit Polyclonal Antibody

#### Product data:

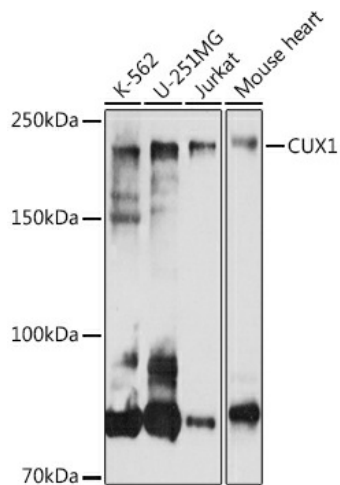
Product Type:	Primary Antibodies
Applications:	ICC/IF, IHC, WB
Recommended Dilution:	WB,1:1000 - 1:2000 IHC,1:50 - 1:200 IF,1:50 - 1:200
Reactivity:	Human, Mouse, Rat
Modifications:	Unmodified
Host:	Rabbit
Isotype:	IgG
Clonality:	Polyclonal
Immunogen:	Recombinant fusion protein containing a sequence corresponding to amino acids 1-280 of human CUX1 (NP_001189472.1).
Formulation:	Buffer: PBS with 0.02% sodium azide,50% glycerol,pH7.3.
Concentration:	lot specific
Purification:	Affinity purification
Conjugation:	Unconjugated
Storage:	Store at -20°C. Avoid freeze / thaw cycles.
Stability:	Shelf life: one year from despatch.
Predicted Protein Size:	72-77kDa/147-165kDa
Gene Name:	cut like homeobox 1
Database Link:	<a href="#">Entrez Gene 1523 Human P39880</a>
Background:	The protein encoded by this gene is a member of the homeodomain family of DNA binding proteins. It may regulate gene expression, morphogenesis, and differentiation and it may also play a role in the cell cycle progression. Several alternatively spliced transcript variants encoding different isoforms have been identified.



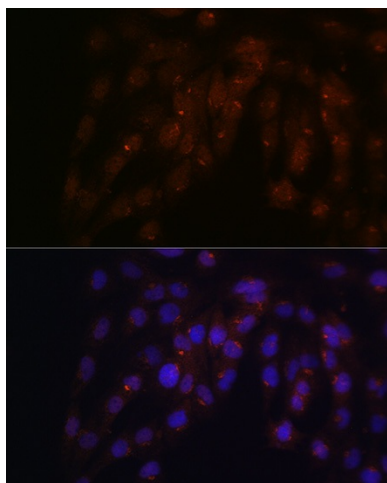
[View online »](#)

**Synonyms:** CASP; CDP; CDP/Cut; CDP/Cux; CDP1; Clox; COY1; CUT; CUTL1; CUX; Cux/CDP; GOLIM6; Nbla10317; p75; p100; p110; p200

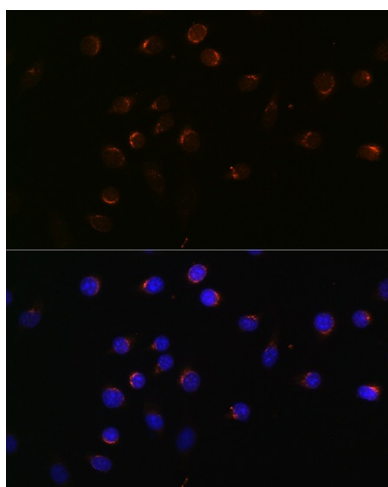
**Product images:**



Western blot analysis of extracts of various cell lines, using CUX1 antibody ([TA375235]) at 1:1000 dilution. | Secondary antibody: HRP Goat Anti-Rabbit IgG (H+L) at 1:10000 dilution. | Lysates/proteins: 25ug per lane. | Blocking buffer: 3% nonfat dry milk in TBST. | Detection: ECL Basic Kit . | Exposure time: 30s.



Immunofluorescence analysis of C6 cells using CUX1 antibody ([TA375235]) at dilution of 1:100. Blue: DAPI for nuclear staining.



Immunofluorescence analysis of L929 cells using CUX1 antibody ([TA375235]) at dilution of 1:100. Blue: DAPI for nuclear staining.