

## Product datasheet for **TA375228**

### CTU2 Rabbit Polyclonal Antibody

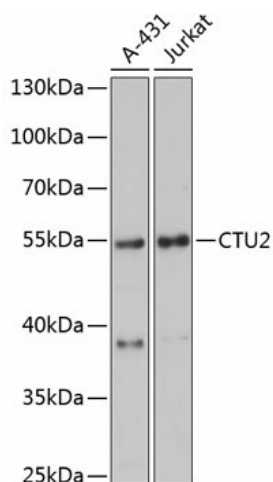
#### Product data:

Product Type:	Primary Antibodies
Applications:	WB
Recommended Dilution:	WB,1:500 - 1:2000
Reactivity:	Human
Modifications:	Unmodified
Host:	Rabbit
Isotype:	IgG
Clonality:	Polyclonal
Immunogen:	Recombinant fusion protein containing a sequence corresponding to amino acids 186-515 of human CTU2 (NP_001012777.1).
Formulation:	Buffer: PBS with 0.02% sodium azide,50% glycerol,pH7.3.
Concentration:	lot specific
Purification:	Affinity purification
Conjugation:	Unconjugated
Storage:	Store at -20°C. Avoid freeze / thaw cycles.
Stability:	Shelf life: one year from despatch.
Predicted Protein Size:	46kDa/52kDa/56kDa
Gene Name:	cytosolic thiouridylase subunit 2
Database Link:	<a href="#">Entrez Gene 348180 Human Q2VPK5</a>
Background:	This gene encodes a protein which is involved in the post-transcriptional modification of transfer RNAs (tRNAs). The encoded protein plays a role in thiolation of uridine residue present at the wobble position in a subset of tRNAs, resulting in enhanced codon reading accuracy. Alternative splicing results in multiple transcript variants encoding different isoforms.
Synonyms:	C16orf84; NCS2; UPF0432



[View online »](#)

## Product images:



Western blot analysis of extracts of various cell lines, using CTU2 antibody (TA375228) at 1:3000 dilution. | Secondary antibody: HRP Goat Anti-Rabbit IgG (H+L) at 1:10000 dilution. | Lysates/proteins: 25ug per lane. | Blocking buffer: 3% nonfat dry milk in TBST. | Detection: ECL Basic Kit . | Exposure time: 90s.