

Product datasheet for TA375217S

Cathepsin G (CTSG) Rabbit Polyclonal Antibody

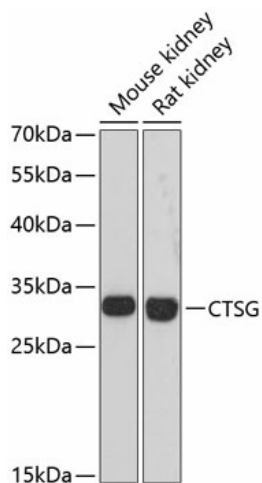
Product data:

Product Type:	Primary Antibodies
Applications:	ELISA, IHC, WB
Recommended Dilution:	WB, 1:500 - 1:2000 IHC-P, 1:50 - 1:100 ELISA, Recommended starting concentration is 1 µg/mL. Please optimize the concentration based on your specific assay requirements.
Reactivity:	Human, Mouse, Rat
Modifications:	Unmodified
Host:	Rabbit
Isotype:	IgG
Clonality:	Polyclonal
Formulation:	Buffer: PBS with 0.02% sodium azide, 50% glycerol, pH 7.3.
Concentration:	lot specific
Purification:	Affinity purification
Conjugation:	Unconjugated
Storage:	Store at -20°C. Avoid freeze / thaw cycles.
Stability:	Shelf life: one year from despatch.
Predicted Protein Size:	29kDa
Gene Name:	cathepsin G
Database Link:	Entrez Gene 1511 Human P08311
Background:	The protein encoded by this gene, a member of the peptidase S1 protein family, is found in azurophilic granules of neutrophilic polymorphonuclear leukocytes. The encoded protease has a specificity similar to that of chymotrypsin C, and may participate in the killing and digestion of engulfed pathogens, and in connective tissue remodeling at sites of inflammation. In addition, the encoded protein is antimicrobial, with bacteriocidal activity against <i>S. aureus</i> and <i>N. gonorrhoeae</i> . Transcript variants utilizing alternative polyadenylation signals exist for this gene.


[View online »](#)

Synonyms: CG; MGC23078

Product images:



Western blot analysis of various lysates using Cathepsin G Rabbit pAb ([TA375217]) at 1:3000 dilution.

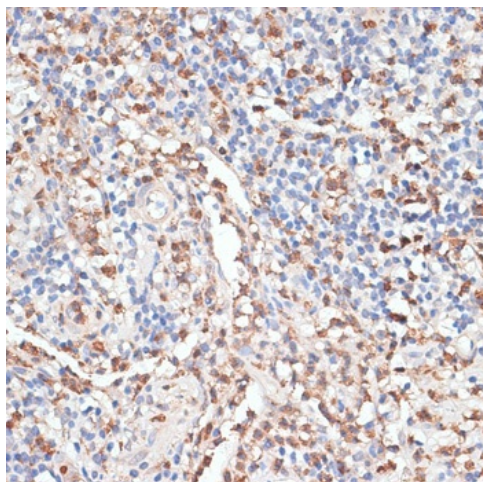
Secondary antibody: HRP-conjugated Goat anti-Rabbit IgG (H+L) (AS014) at 1:10000 dilution.

Lysates/proteins: 25µg per lane.

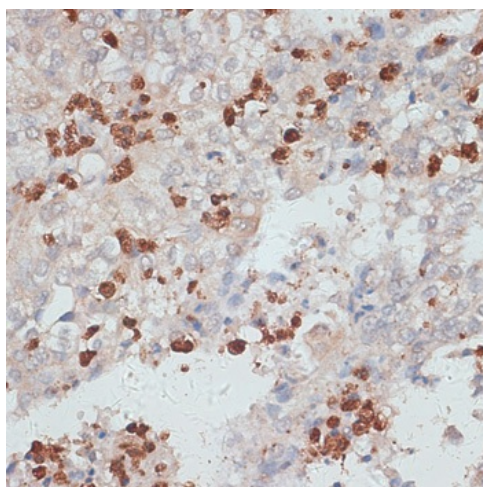
Blocking buffer: 3% nonfat dry milk in TBST.

Detection: ECL Basic Kit (RM00020).

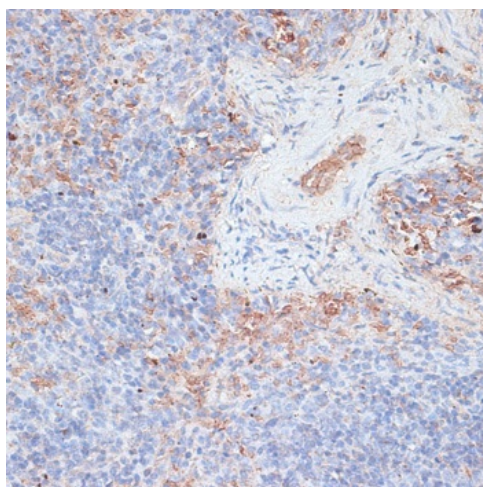
Exposure time: 90s.



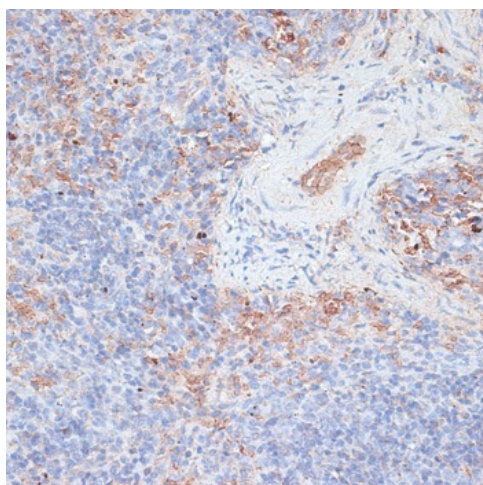
Immunohistochemistry analysis of paraffin-embedded Human tonsil using Cathepsin G Rabbit pAb ([TA375217]) at dilution of 1:100 (40x lens). Microwave antigen retrieval performed with 0.01M PBS Buffer (pH 7.2) prior to IHC staining.



Immunohistochemistry analysis of paraffin-embedded Human appendix using Cathepsin G Rabbit pAb ([TA375217]) at dilution of 1:100 (40x lens). Microwave antigen retrieval performed with 0.01M PBS Buffer (pH 7.2) prior to IHC staining.



Immunohistochemistry analysis of paraffin-embedded Human uterine cancer using Cathepsin G Rabbit pAb ([TA375217]) at dilution of 1:100 (40x lens). Microwave antigen retrieval performed with 0.01M PBS Buffer (pH 7.2) prior to IHC staining.



Immunohistochemistry analysis of paraffin-embedded Mouse spleen using Cathepsin G Rabbit pAb ([TA375217]) at dilution of 1:100 (40x lens). Microwave antigen retrieval performed with 0.01M PBS Buffer (pH 7.2) prior to IHC staining.