

Product datasheet for **TA375210S**

CTRB1 Rabbit Polyclonal Antibody

Product data:

Product Type:	Primary Antibodies
Applications:	ELISA, ICC/IF, IHC, WB
Recommended Dilution:	WB, 1:500 - 1:2000 IHC-P, 1:50 - 1:100 IF/ICC, 1:50 - 1:100 ELISA, Recommended starting concentration is 1 µg/mL. Please optimize the concentration based on your specific assay requirements.
Reactivity:	Human, Mouse, Rat
Modifications:	Unmodified
Host:	Rabbit
Isotype:	IgG
Clonality:	Polyclonal
Formulation:	Buffer: PBS with 0.02% sodium azide, 50% glycerol, pH 7.3.
Concentration:	lot specific
Purification:	Affinity purification
Conjugation:	Unconjugated
Storage:	Store at -20°C. Avoid freeze / thaw cycles.
Stability:	Shelf life: one year from despatch.
Predicted Protein Size:	28kDa
Gene Name:	chymotrypsinogen B1
Database Link:	Entrez Gene 1504 Human P17538



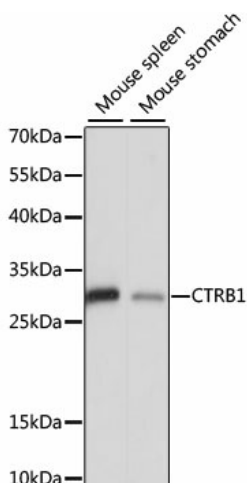
[View online »](#)

Background:

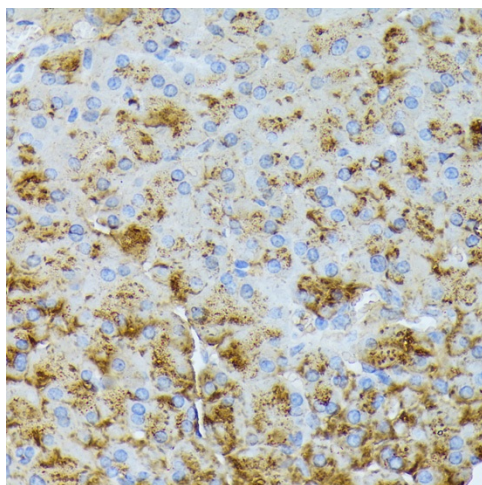
This gene encodes a member of the serine protease family of enzymes and forms a principal precursor of the pancreatic proteolytic enzymes. The encoded preproprotein is synthesized in the acinar cells of the pancreas and secreted into the small intestine where it undergoes proteolytic activation to generate a functional enzyme. This CTRB1 gene is located head-to-head with the related CTRB2 gene. Some human populations have an alternate haplotype which inverts a 16.6 Kb region containing portions of intron 1, exon 1, and the upstream sequence of the CTRB1 and CTRB2 genes. In this inversion haplotype exon 1 and flanking sequence is swapped in CTRB1 and CTRB2. This inversion is associated with differential gene expression and increased risk for chronic pancreatitis. The GRCh38 assembly represents the minor allele for SNP rs8048956 of the CTRB1 gene. SNP rs8048956 in intron 1 of the CTRB2 gene is diagnostic for this inversion. This CTRB1 gene encodes distinct isoforms, some or all of which may undergo similar processing to generate the mature protein.

Synonyms:

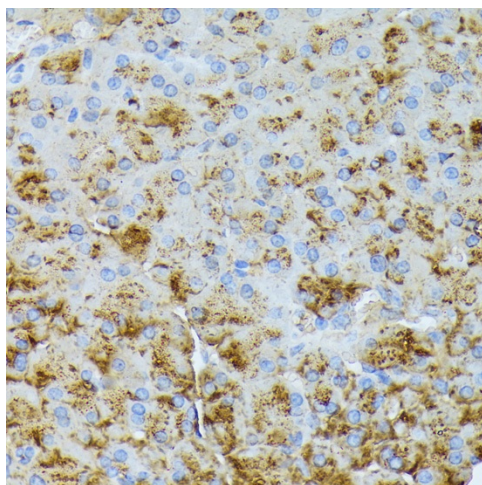
CTRB; FLJ42412; MGC88037

Product images:


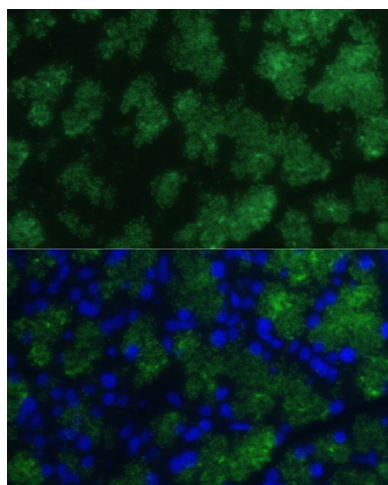
Western blot analysis of various lysates using CTRB1 Rabbit pAb (TA375210S) at 1:1000 dilution. Secondary antibody: HRP-conjugated Goat anti-Rabbit IgG (H+L) (AS014) at 1:10000 dilution. Lysates/proteins: 25µg per lane. Blocking buffer: 3% nonfat dry milk in TBST. Detection: ECL Basic Kit (RM00020). Exposure time: 5s.



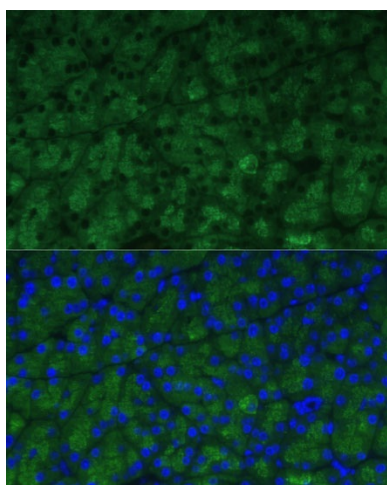
Immunohistochemistry analysis of paraffin-embedded Mouse lung using CTRB1 Rabbit pAb ([TA375210]) at dilution of 1:100 (40x lens). Microwave antigen retrieval performed with 0.01M PBS Buffer (pH 7.2) prior to IHC staining.



Immunohistochemistry analysis of paraffin-embedded Mouse pancreas using CTRB1 Rabbit pAb ([TA375210]) at dilution of 1:100 (40x lens). Microwave antigen retrieval performed with 0.01M PBS Buffer (pH 7.2) prior to IHC staining.



Immunofluorescence analysis of paraffin-embedded rat pancreas using CTRB1 Rabbit pAb ([TA375210]) at dilution of 1:100 (40x lens). Secondary antibody: Cy3-conjugated Goat anti-Rabbit IgG (H+L) (AS007) at 1:500 dilution. Blue: DAPI for nuclear staining.



Immunofluorescence analysis of paraffin-embedded mouse pancreas using CTRB1 Rabbit pAb ([TA375210]) at dilution of 1:100 (40x lens). Secondary antibody: Cy3-conjugated Goat anti-Rabbit IgG (H+L) (AS007) at 1:500 dilution. Blue: DAPI for nuclear staining.